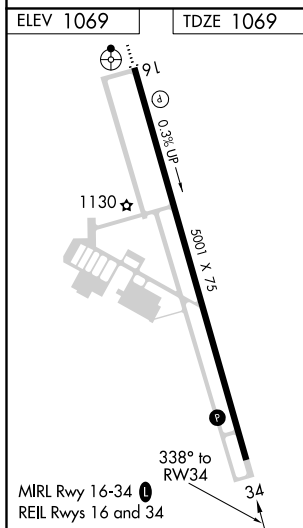
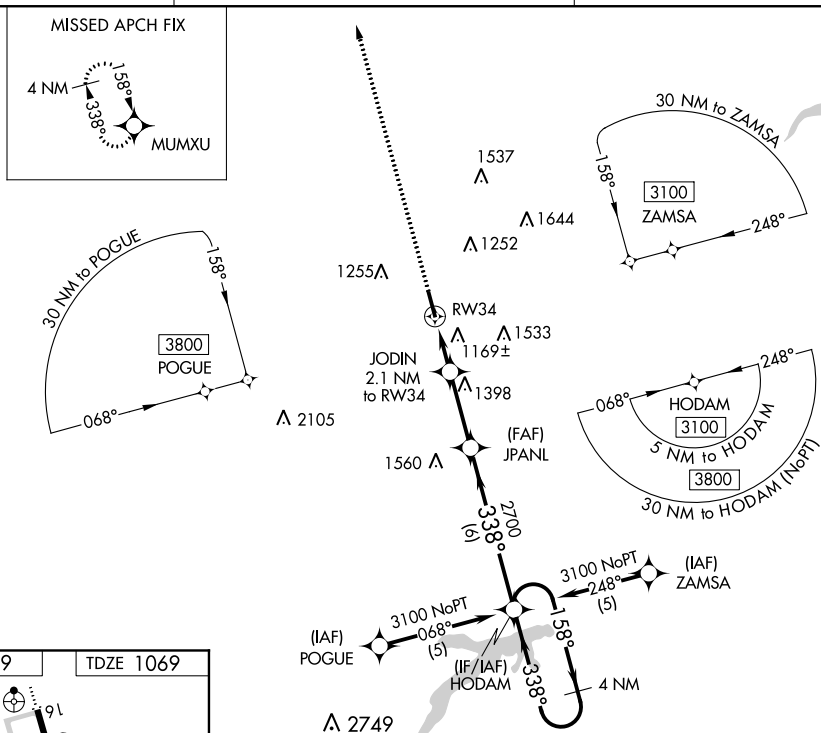


**RNAV (GPS) RWY 34**  
GUTHRIE-EDMOND RGNL (GOK)

**MISSED APPROACH:** Climb to 3100 direct MUMXU and hold.

UNICOM  
122.8 (CTAF) **L**

3100 MUMXU

JODIN 2.1 NM to RW34

JPANL

HODAM

4 NM Holding Pattern

158°

3100

\*RNAV only.

\*1 NM to RW34

RW34

1 NM

1.1 NM

2.8 NM

6 NM

338°

1760

2700

GP 3.00° TCH 45°

CATEGORY	A	B	C	D
LPV DA	1319-1	250 (300-1)		NA
RNAV MDA	1420-1	351 (400-1)		NA
CIRCLING	1540-1	471 (500-1)		NA