

APP CRS  
**060°**

Rwy Idg  
TDZE  
**631**

Apt Elev  
**632**

**RNAV (GPS) RWY 6**  
HEBER SPRINGS MUNI (HBZ)

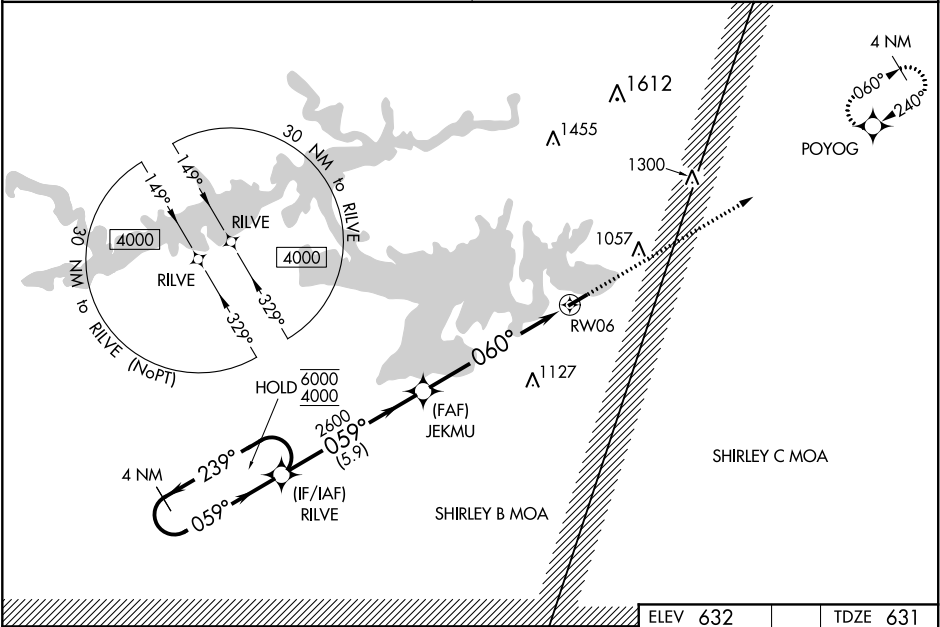
RNP APCH.

Procedure NA at night. Rwy 6 helicopter visibility reduction below 1 SM NA. Obtain local altimeter setting on CTAF; when not received, use Batesville altimeter setting and increase all MDAs 80 feet, and increase LNAV visibility Cat C and D ¼ SM. Increase Circling visibility Cat C ½ SM, Cat D ½ SM.

MISSED APPROACH: Climb to 4000 direct POYOG and hold, continue climb-in hold 4000.

MEMPHIS CENTER  
**126.85 281.55**

UNICOM  
**122.7 (CTAF) 0**



ELEV 632

TDZE 631

4000 POYOG

4 NM Holding Pattern

RILVE

JEKMU

RW06

6000 4000

239° 059°

059°

2600

060°

3.00°

TCH 36

5.9 NM

6.1 NM

CATEGORY

A

B

C

D

LNAV MDA

1240-1

609 (700-1)

1240-1¾

609 (700-1¾)

CIRCLING

1240-1  
608 (700-1)

1380-1  
748 (800-1)

1380-2¼  
748 (800-2¼)

1440-2½  
808 (900-2½)

MIRL Rwy 6-24

REIL Rws 6 and 24