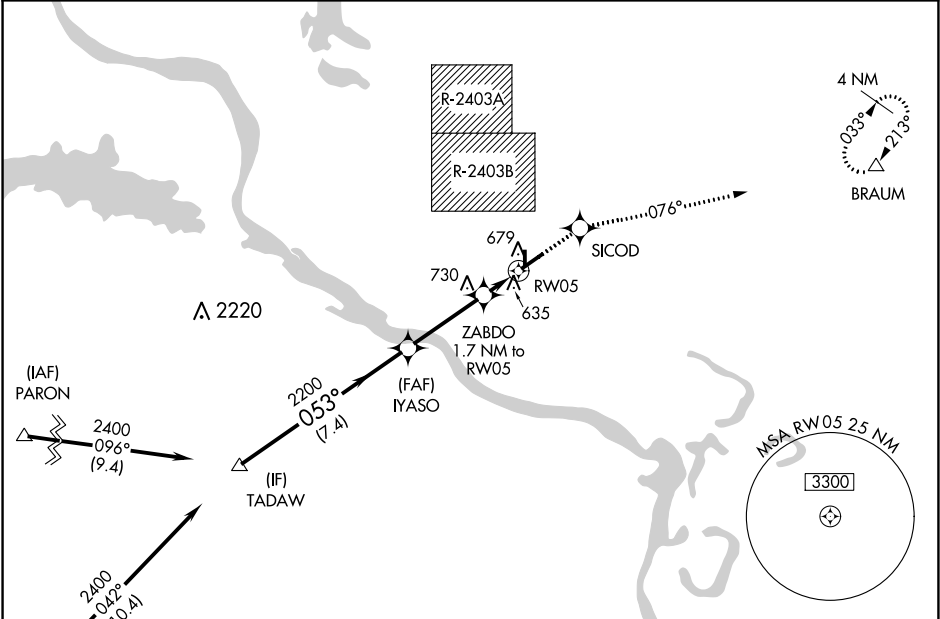


WAAS CH 58106 W05A	APP CRS 053°	Rwy Idg TDZE 541 Apt Elev 545
--	------------------------	---

RNAV (GPS) RWY 5
NORTH LITTLE ROCK MUNI (ORK)

NA DME/DME RNP-0.3 NA. Use Little Rock/Bill and Hillary Clinton National/Adams Field altimeter setting, when not received procedure NA. Circling to Rwy 17 NA at night. Circling NA for Cats B and C north of Rwy 5-23 when restricted area R-2403B in use. Baro-VNAV NA. Visibility reduction by helicopters NA.	MISSED APPROACH: Climb to 2000 direct SICOD and via 076° track to BRAUM and hold.
---	---

AWOS-3PT 123.775	LIT ASOS 125.65	LITTLE ROCK APP CON 119.5 306.2	CLNC DEL 121.6	UNICOM 123.075 (CTAF)
----------------------------	---------------------------	---	--------------------------	---------------------------------



ELEV 545		TDZE 541	
TADAW		SICOD	
2400		076° tr	
053°		BRAUM	
Procedure Turn NA		*LNAV only.	
GP 3.00° TCH 40		RWY 5	
7.4 NM		3.3 NM	
2200		1100*	
CATEGORY		A	
LPV DA		854-1 313 (400-1)	
LNAV/VNAV DA		986-1½ 445 (500-1½)	
LNAV MDA		1000-1 459 (500-1)	
CIRCLING		1060-1 515 (600-1)	