

| | | | |
|--|------------------------|---|-------------|
| WAAS CH 49135 W04A | APP CRS 040° | Rwy Idg TDZE 181 Apt Elev 182 | 5002 |
|--|------------------------|---|-------------|

RNAV (GPS) RWY 4

DEXTER B FLORENCE MEMORIAL FIELD (ADF)

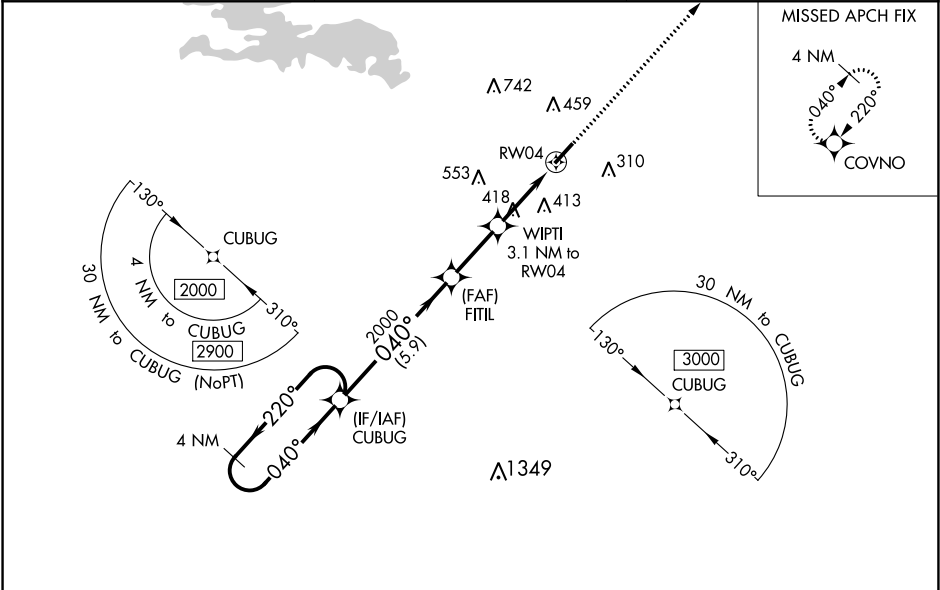
▼

NA

DME/DME RNP-0.3 NA. When local alimeter setting not received use Hot Springs altimeter setting and increase all DA 103 feet and MDA 120 feet and increase LPV all Cats visibility 1/8 mile and LNAV/VNAV all Cats visibility and Circling Cat C visibility 1/2 mile.
For uncompensated Baro-VNAV systems, LNAV/VNAV NA below -15°C (5°F) or above 54°C (130°F). Baro-VNAV NA when using Hot Springs altimeter setting. Helicopter visibility reduction below 3/4 SM NA. Night landing: Rwy 22 NA.

MISSED APPROACH:
Climb to 2100 direct COVNO and hold.

| | | |
|----------------------------|---|-------------------------------|
| AWOS-3PT 118.175 | MEMPHIS CENTER 128.475 377.15 | UNICOM 122.7 (CTAF) |
|----------------------------|---|-------------------------------|



ELEV 182

TDZE 181

VGSI and RNAV glidepath not coincident (VGSI Angle 3.00/TCH 23).

4 NM Holding Pattern

CUBUG

FITIL

WIPTI

RW04

2100

COVNO

*LNNAV only.

| CATEGORY | A | B | C | D |
|--------------|----------------------|----------------------|-------------------------------|----|
| LPV DA | 431-1 | 250 (300-1) | | NA |
| LNAV/VNAV DA | 669-1 5/8 | 488 (500-1 1/8) | | NA |
| LNAV MDA | 680-1 | 499 (500-1) | 680-1 3/8 499 (500-1 1/8) | NA |
| CIRCLING | 760-1 578 (600-1) | 800-1 618 (700-1) | 1040-2 1/2 858 (900-2 1/2) | NA |

MIRL Rwy 4-22

REIL Rwy 4 and 22

SC-1, 03 DEC 2020 to 31 DEC 2020

SC-1, 03 DEC 2020 to 31 DEC 2020