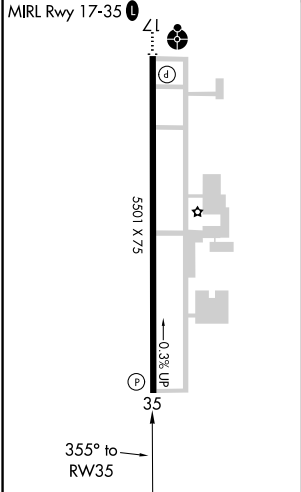
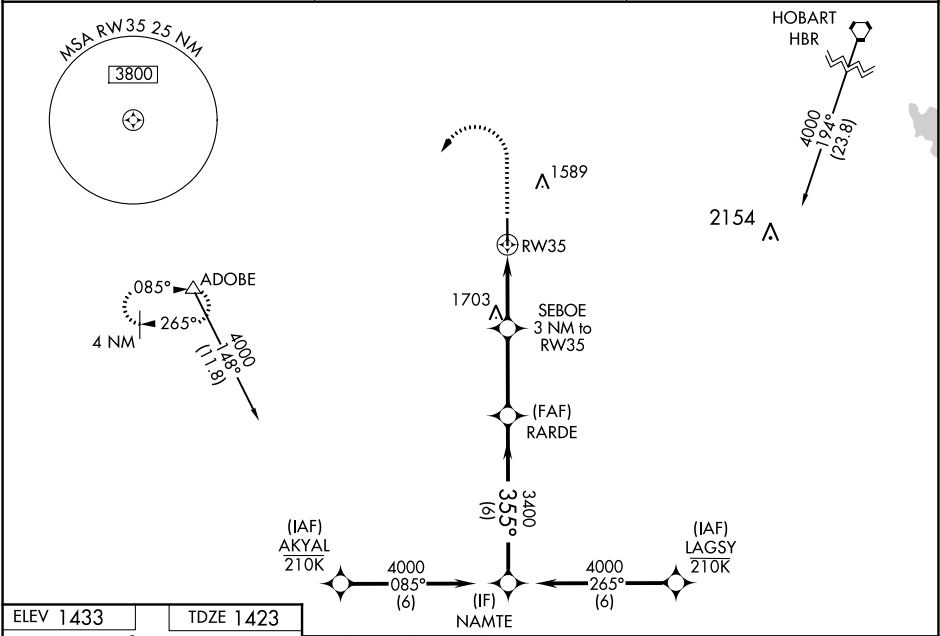


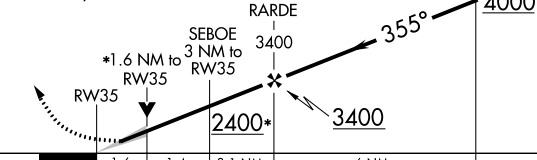
WAAS CH 93914 W35A	APP CRS 355°	Rwy Idg TDZE 1423 Apt Elev 1433
--	------------------------	---

RNAV (GPS) RWY 35
ALTUS/QUARTZ MOUNTAIN RGNL (A.X.S)

RNP APCH. <div><div></div><div>For uncompensated Baro-VNAV systems, LNAV/VNAV NA below -17°C or above 54°C.</div></div>	MISSED APPROACH: Climb to 2100 then climbing left turn to 4000 direct ADOBE and hold.
--	---

AWOS-3PT 118.825	ALTUS APP CON* 125.1 353.7	UNICOM 122.8 (CTAF) 0
----------------------------	--------------------------------------	---------------------------------



2100 ↑		4000 ↘		ADOBE △		VGSi and RNAV glidepath not coincident (VGSi Angle 3.00/TCH 40).			
*LNAV only.						NAMTE			
						GP 3.00° TCH 40			
CATEGORY		A		B		C		D	
LPV DA		1673-7/8		250 (300-7/8)				NA	
LNAV/ VNAV		DA		1673-7/8		250 (300-7/8)		NA	
LNAV MDA		1960-1		537 (600-1)		1960-1 1/2 537 (600-1 1/2)		NA	
CIRCLING		1960-1		527 (600-1)		2020-1 1/2 587 (600-1 1/2)		NA	