

WAAS CH 86216 W17A	APP CRS 175°	Rwy Idg TDZE 1433 Apt Elev 1433
--	------------------------	---

RNAV (GPS) RWY 17

ALTUS/QUARTZ MOUNTAIN RGNL (A.X.S)

⚠

For uncompensated Baro-VNAV systems, LNAV/VNAV NA below -17°C (2°F) or above 54°C (130°F). Baro-VNAV and VDP NA when using Hobart Rgnl altimeter setting. DME/DME RNP-0.3 NA. When local altimeter setting not received, use Hobart Rgnl altimeter setting and increase LPV DA to 1754 feet and LNAV/VNAV DA to 1997 feet and increase all MDA 80 feet. Increase LPV, LNAV/VNAV all Cats and Circling Cat C visibility ¼ mile, increase LNAV Cat C visibility ½ mile.

ODALS

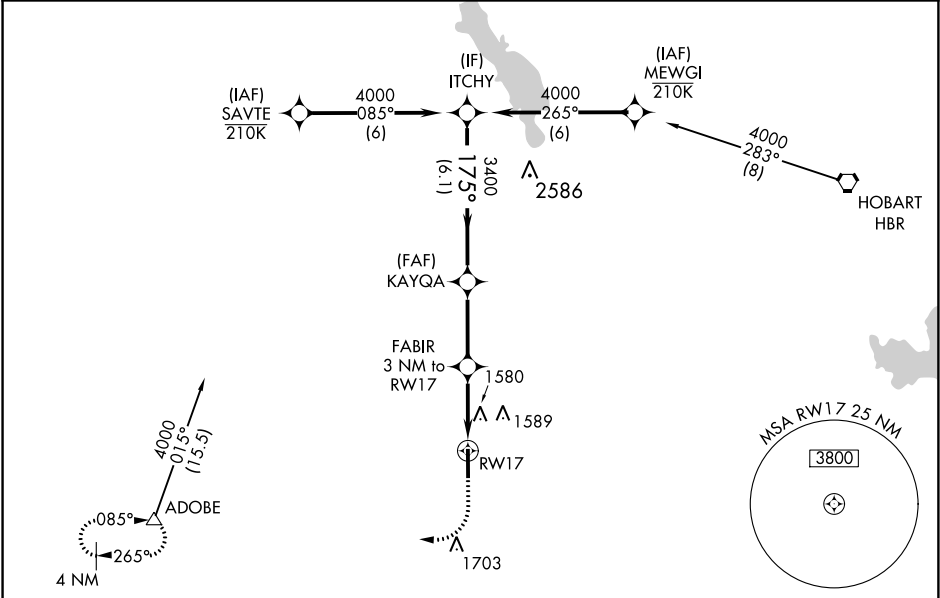
⋮

⬆

MISSED APPROACH:

Climb to 2000 then climbing right turn to 4000 direct ADOBE and hold.

AWOS-3PT 118.825	ALTUS APP CON★ 125.1 353.7	UNICOM 122.8 (CTAF) 0
----------------------------	--------------------------------------	---------------------------------



ITCHY

4000

175°

KAYQA

3400

FABIR 3 NM to RW17

*2420

RW17

GP 3.00° TCH 40

6.1 NM

3.1 NM

1.7 NM

1.3 NM

2000

4000

ADOBE

*LNAV only

CATEGORY	A	B	C	D
LPV DA	1683-7⁄8	250 (300-7⁄8)		NA
LNAV/VNAV DA	1926-13⁄4	493 (500-13⁄4)		NA
LNAV MDA	1880-1	447 (500-1)	1880-13⁄8 447 (500-13⁄8)	NA
CIRCLING	1920-1	487 (500-1)	2020-11⁄2 587 (600-11⁄2)	NA

ELEV 1433

TDZE 1433

175° to RW17

41

550 X 75

0.35 UP

35

MIRL Rwy 17-35 0

SC-1, 03 DEC 2020 to 31 DEC 2020

SC-1, 03 DEC 2020 to 31 DEC 2020