

APP CRS  
225°

Rwy Idg  
4352

TDZE  
289

Apt Elev  
290

RNAV (GPS) RWY 22

KIRK FIELD (PGR)

RNP APCH

▼

Circling NA to Rwy 8 and 26. Rwy 22 helicopter visibility reduction below ¾ SM NA. When local altimeter setting not received, use Jonesboro altimeter setting.

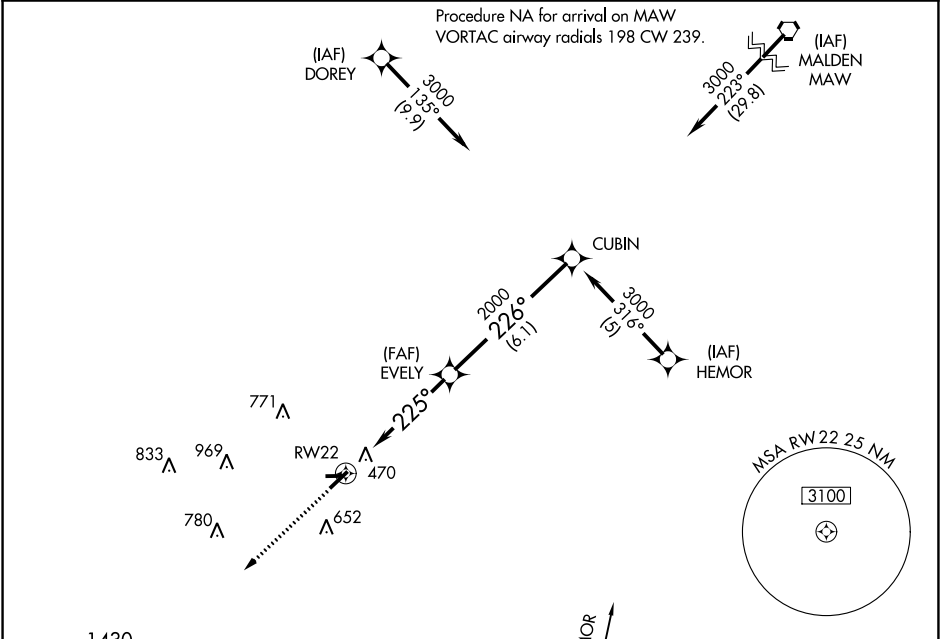
MISSED APPROACH: Climb to 2500 direct AYATO WP and hold.

MEMPHIS CENTER

120.075 289.4

UNICOM

122.8 (CTAF) 0



ELEV 290

TDZE 289

Procedure NA for arrival on GQE  
VOR/DME airway radials 329 CW 017.

2500

AYATO

Visual Segment - Obstacles.

CUBIN

Procedure Turn NA

RW22

EVELY

3000

225° 226°

2000

5.1 NM 6.1 NM

CATEGORY	A	B	C	D
LNAV MDA	820-1¼	531 (600-1¼)	NA	
CIRCLING	860-1¼	570 (600-1¼)	NA	

MIRL Rwy 4-22 0

REIL Rwy 4 and 22 0