

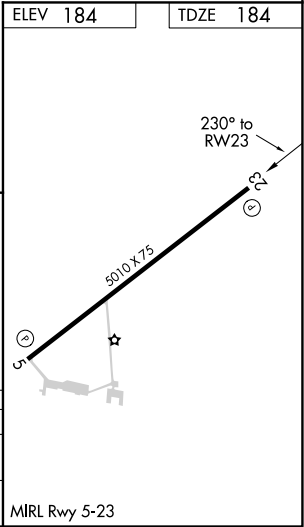
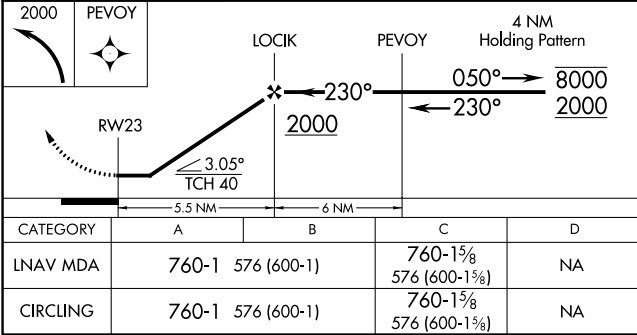
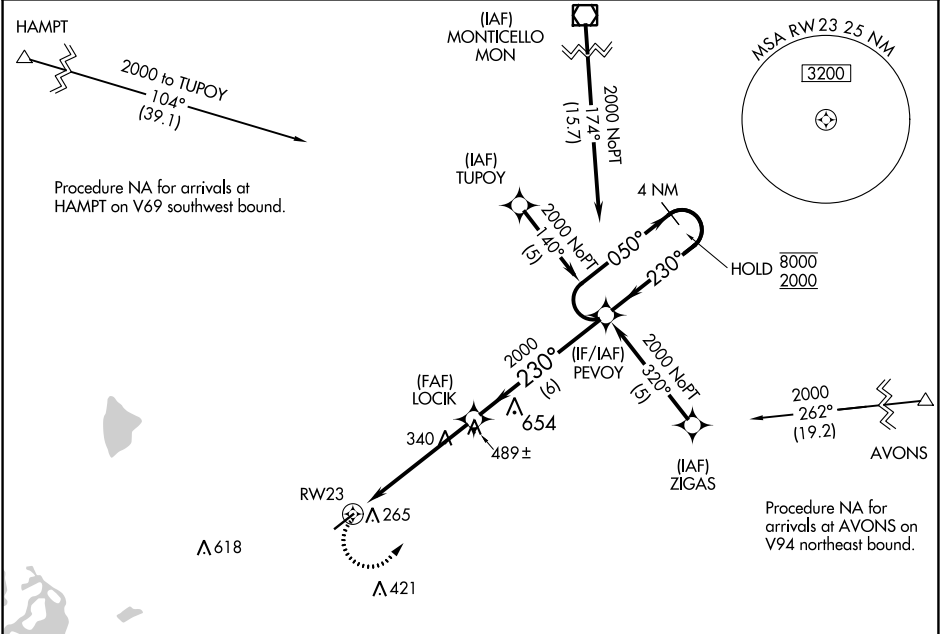
APP CRS	Rwy Idg	5010
230°	TDZE	184
	Apt Elev	184

RNAV (GPS) RWY 23

Z M JACK STELL FIELD (C'RT')

RNP APCH.	MISSED APPROACH: Climbing left turn to 2000 direct PEVOY and hold.
Rwy 23 helicopter visibility reduction below 1 SM NA. Straight-in and Circling Rwy 23 NA at night. Use Monroe, LA, altimeter setting; when not received, use El Dorado altimeter setting and increase all MDA's 20 feet and increase LNAV and Circling Cat C visibilities ½ SM.	

MLU ASOS 125.05	MEMPHIS CENTER 135.875 269.35	UNICOM 122.8 (CTAF) 0
--------------------	----------------------------------	--------------------------



SC-1, 03 DEC 2020 to 31 DEC 2020

SC-1, 03 DEC 2020 to 31 DEC 2020