

WAAS CH <b>82237</b> <b>W18A</b>	APP CRS <b>176°</b>	Rwy Idg TDZE <b>1477</b> Apt Elev <b>1477</b>
--	------------------------	---

RNAV (GPS) RWY 18

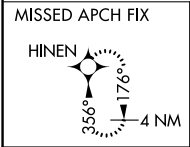
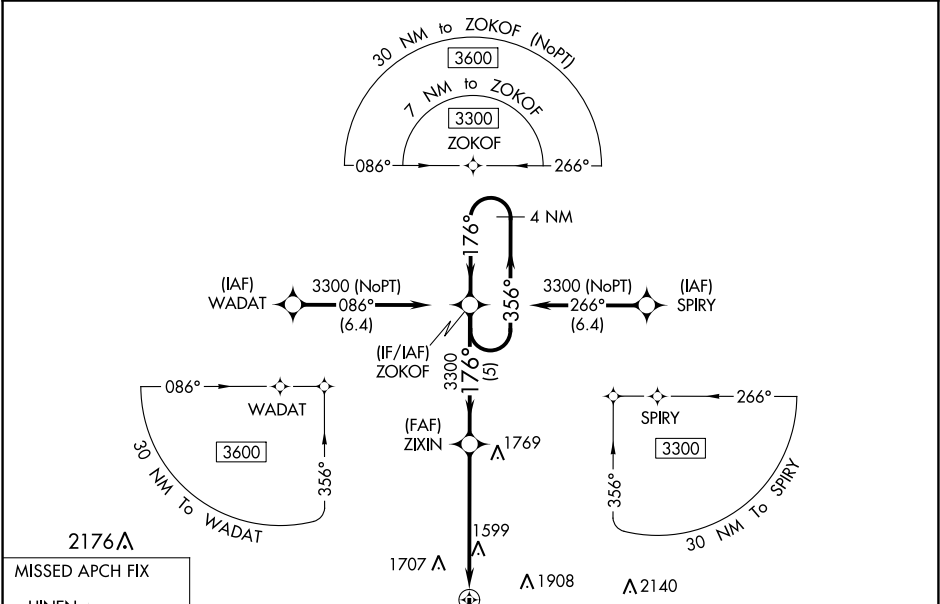
ALVA RGNL (AVK)

⚠

For uncompensated Baro-VNAV systems, LNAV/VNAV NA below -17°C (2°F) or above 54°C (130°F). DME/DME RNP-0.3 NA. When local altimeter setting not received, use Vance AFB altimeter setting and increase all DA 127 feet and all MDA 140 feet; increase LPV all Cats and LNAV Cat C visibility ¾ mile, LNAV/VNAV all Cats and Circling Cat C visibility ½ mile. Baro-VNAV and VDP NA when using Vance AFB altimeter setting. Helicopter visibility reduction below ¾ SM NA.

MISSED APPROACH:  
Climb to 3300 direct HINEN and hold.

AWOS-3 <b>121.125</b>	VANCE APP CON ★ <b>126.75 346.325</b>	UNICOM <b>122.8 (CTAF) 0</b>
--------------------------	--	---------------------------------



4 NM Holding Pattern		ZOKOF	ZIXIN	3300	HINEN
3300 ← 356°		176° →	3300	*1.2 NM to RWY 18	RWY 18
GP 3.00° TCH 47		5 NM	4.4 NM	1.2 NM	
CATEGORY	A	B	C	D	
LPV DA	1738-7/8	261 (300-7/8)		NA	
LNAV/VNAV DA	1748-7/8	271 (300-7/8)		NA	
LNAV MDA	1900-1	423 (500-1)	1900-1 1/4	NA	
			423 (500-1 1/4)		
CIRCLING	1980-1	2120-1	2220-2 1/4	NA	
	503 (600-1)	643 (700-1)	743 (800-2 1/4)		

