

WAAS CH <b>65806</b> <b>W23A</b>	APP CRS <b>230°</b>	Rwy Idg <b>6200</b> TDZE <b>262</b> Apt Elev <b>262</b>
--	------------------------	---

RNAV (GPS) RWY 23

JONESBORO MUNI (JBR)

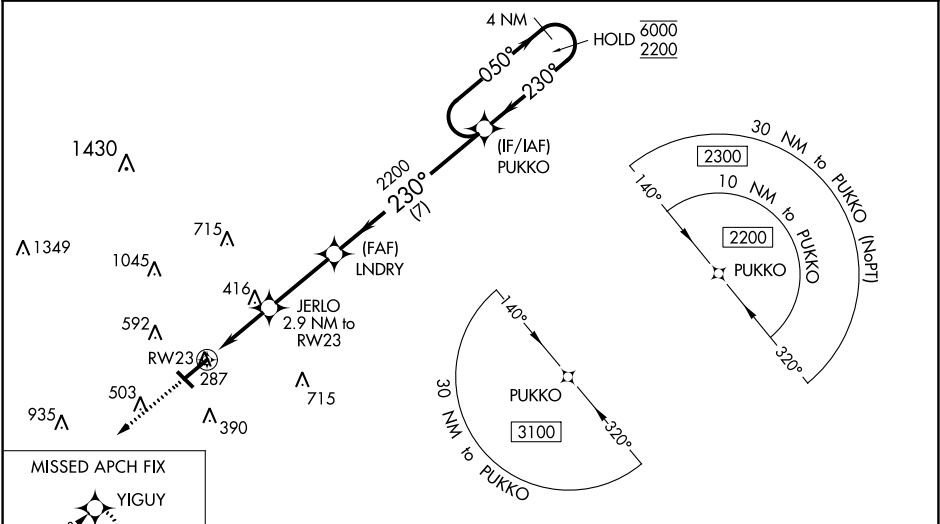
RNP APCH.

⚠ Circling NA northwest of Rwy 5-23. Circling Rwy 31 NA at night. Baro-VNAV and VDP NA when using Walnut Ridge altimeter setting. Rwy 23 helicopter visibility reduction below 3/4 SM NA. For uncompensated Baro-VNAV systems, LNAV/VNAV NA below -12°C or above 54°C. For inop ALS, increase LPV Cat A/B visibility to 3/4 SM. Inop table does not apply to LNAV/VNAV. For inop ALS when using Walnut Ridge altimeter setting, increase LPV Cat A/B visibility to 1 SM. When using Walnut Ridge altimeter setting, inop table does not apply to LNAV/VNAV. When local altimeter setting not received, use Walnut Ridge altimeter setting: increase LPV DA to 600 feet, LNAV/VNAV DA to 630 feet and all visibilities 3/4 SM; increase all MDAs 60 feet and visibility LNAV Cat C/D 1/4 SM.

ODALS

MISSED APPROACH: Climb to 2300 direct YIGUY and hold.

ASOS <b>118.525</b>	MEMPHIS CENTER <b>120.075 289.4</b>	UNICOM <b>123.0 (CTAF)</b>
------------------------	--	-------------------------------



ELEV 262

TDZE 262

2300

YIGUY

JERLO 2.9 NM to RW23

LNDY 2200

PUKKO

4 NM Holding Pattern

\*LNAV only.

1.2 NM to RW23

1.2

1.7 NM

3 NM

7 NM

2300

2200

2000

GP 3.00° TCH 53

CATEGORY	A	B	C	D
LPV DA	546-3/4 284 (300-3/4)			
LNAV/VNAV DA	576-7/8 314 (400-7/8)			
LNAV MDA	680-3/4 418 (500-3/4)		680-1 418 (500-1)	
CIRCLING	740-1 478 (500-1)		820-2 558 (600-2)	

