

WAAS CH 61012 W18A	APP CRS 177°	Rwy Idg TDZE 1016 Apt Elev 1016	6203
--	------------------------	---	-------------

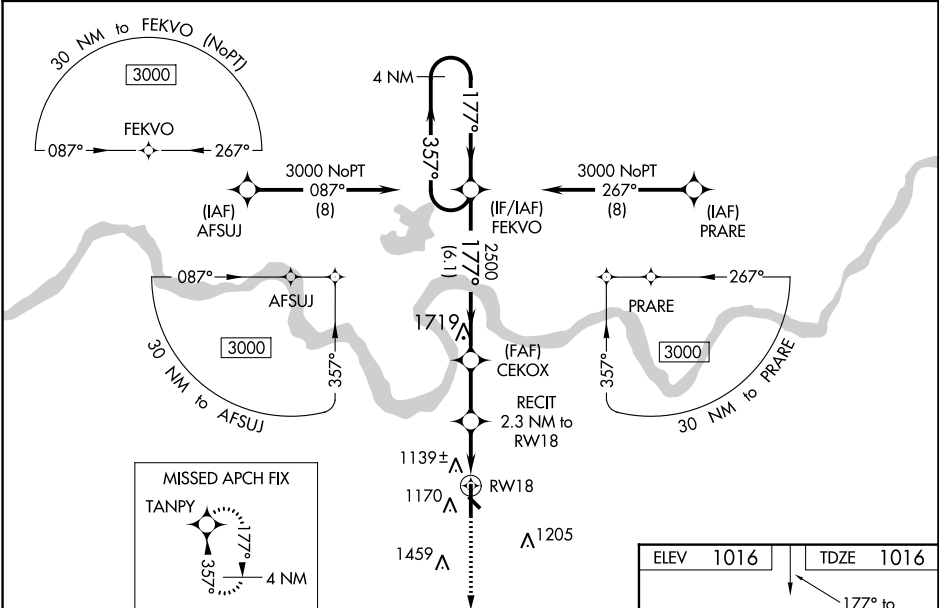
RNAV (GPS) RWY 18
ADA RGNL (ADH)

⚠ Inop table does not apply to LPV. For uncompensated Baro-VNAV systems, LNAV/VNAV NA below -17°C (2°F) or above 54°C (130°F). Baro-VNAV and VDP NA when using Seminole altimeter setting. Circling Rwy 31 NA at night. Rwy 18 helicopter visibility reduction below 3/4 SM NA. DME/DME RNP-0.3 NA. For inop ALS, increase LNAV/VNAV Cats A and B visibility 1/2 SM. For inop ALS when using Seminole altimeter setting; increase LPV all Cats visibility to 1 SM and LNAV/VNAV all Cats to 1/2 SM. When local altimeter setting not received, use Seminole altimeter setting: increase LPV DA to 1332 feet, LNAV/VNAV DA to 1386 and all MDA 80 feet. Increase LPV all Cats visibility 1/2 SM, increase LNAV/VNAV all Cats and LNAV Cat C and D visibility 1/4 SM. Increase Circling Cats C/D visibility 1/2 SM.

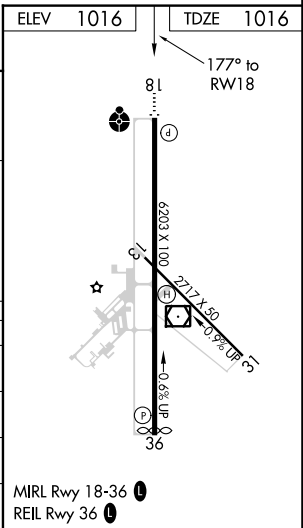
ODALS

MISSED APPROACH:
Climb to 3000 direct
TANPY and hold.

AWOS-3 118.725	FORT WORTH CENTER 132.2 338.35	UNICOM 122.8 (CTAF) 0
--------------------------	--	---------------------------------



4 NM Holding Pattern		VGSI and RNAV glidepath not coincident (VGSI Angle 3.00/TCH 31).		3000	TANPY
FEKVO		CEKOX	RECIT	2.3 NM to RW18	*LNAV only.
3000		2500	1800	0.9 NM to RW18	
GP 3.00° TCH 55		2500	1800	0.9 NM to RW18	
6.1 NM		2.2 NM	1.4 NM	0.9 NM	
CATEGORY	A	B	C	D	
LPV DA	1266-3/4		250 (300-3/4)		
LNAV/VNAV DA	1320-7/8		304 (400-7/8)		
LNAV MDA	1400-3/4		384 (400-3/4)		
CIRCLING	1520-1		1820-2 1/4		
	504 (600-1)		804 (900-2 1/4)		
CIRCLING	1640-1		1820-2 1/2		
	624 (700-1)		804 (900-2 1/2)		



SC-1, 03 DEC 2020 to 31 DEC 2020

SC-1, 03 DEC 2020 to 31 DEC 2020