

WAAS CH 93619 W17A	APP CRS 175°	Rwy Idg TDZE 1114 Apt Elev 1114
--	------------------------	---

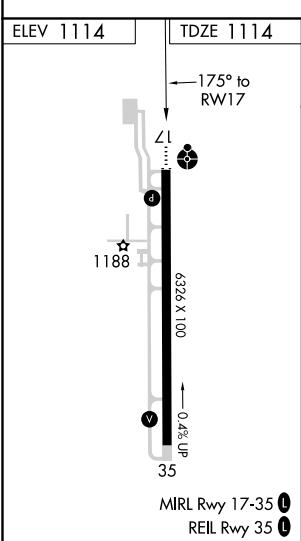
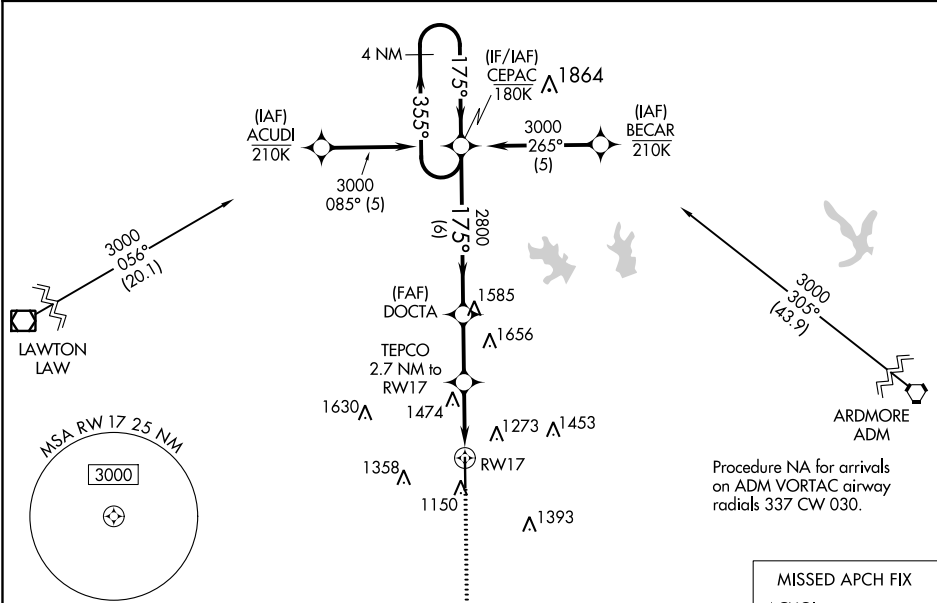
RNAV (GPS) RWY 17
HALLIBURTON FIELD (DUC)

▽ For uncompensated Baro-VNAV systems, LNAV/VNAV NA below -17°C (2°F) or above 54°C (130°F). DME/DME RNP-0.3 NA. Inop table does not apply to LPV all Cats, LNAV/VNAV all Cats, LNAV Cats C/D.

ODALS

MISSED APPROACH:
Climb to 3000 direct ACUGI and hold.

AWOS-3 119.075	FORT SILL APP CON 118.6 290.375	CLNC DEL 118.4	UNICOM 122.8 (CTAF) 0
--------------------------	---	--------------------------	---------------------------------



ELEV 1114	TDZE 1114
3000	ACUGI
*LNAV only.	TEPCO 2.7 NM to RW17
*1.8 NM to RW17	DOCTA 2800
*2020	CEPAC 4 NM Holding Pattern
1.8 NM	0.9 NM
2.4 NM	6 NM
3000	175°
2800	175°
355°	3000
GP 3.00°	TCH 53
CATEGORY	A
LPV DA	1314-3/4
LNAV/VNAV DA	1806-2 1/2
LNAV MDA	1740-3/4
CIRCLING	1740-1

SC-1, 03 DEC 2020 to 31 DEC 2020

SC-1, 03 DEC 2020 to 31 DEC 2020