

LEXINGTON, OKLAHOMA

COPTER RNAV (GPS) RWY 35

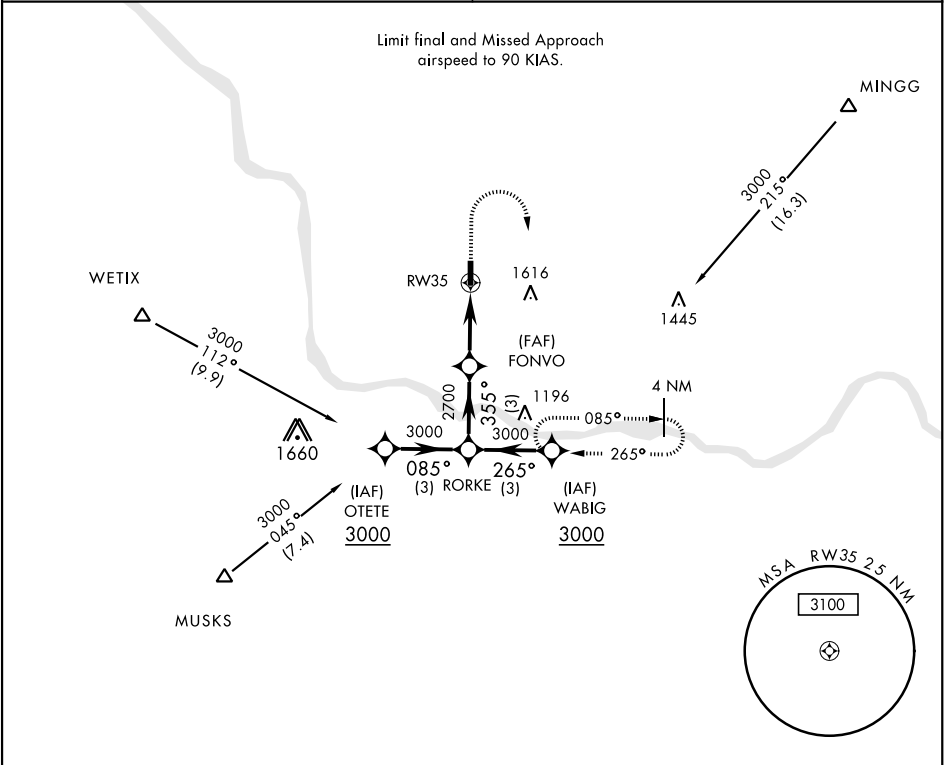
APCH CRS	Rwy Idg
355°	2005
TDZE	1091
Arpt Elev	1091

AL-2497 [USA]

MULDROW AHP (KHMY)

NA Obtain local altimeter setting on CTAF; when not received, use University of Oklahoma Westheimer altimeter setting minimums. DME/DME RNP-0.3 NA	MISSED APPROACH: Climbing right turn to 3000 direct WABIG and hold.
---	---

OKE CITY APP CON 124.2 336.4	MULDROW OPS (Advsy Svc only) 46.9 139.425 227.2 (CTAF)
---------------------------------	---



<div><div>3000</div><div></div></div>		ELEV 1091		TDZE 1091	
CATEGORY		COPTER			
LNAV MDA		1500-1 409 (500-1)			
UNIVERSITY OF OKLAHOMA WESTHEIMER ALTIMETER SETTING MINIMUMS					
LNAV MDA		1560-1 469 (500-1)			
		LIRL Rwy 17-35			

LEXINGTON, OKLAHOMA

35°02'N-97°14'W

MULDROW AHP (KHMY)

Orig 18200

COPTER RNAV (GPS) RWY 35

SC-1, 03 DEC 2020 to 31 DEC 2020

SC-1, 03 DEC 2020 to 31 DEC 2020