

LEXINGTON, OKLAHOMA

COPTER RNAV (GPS) RWY 17

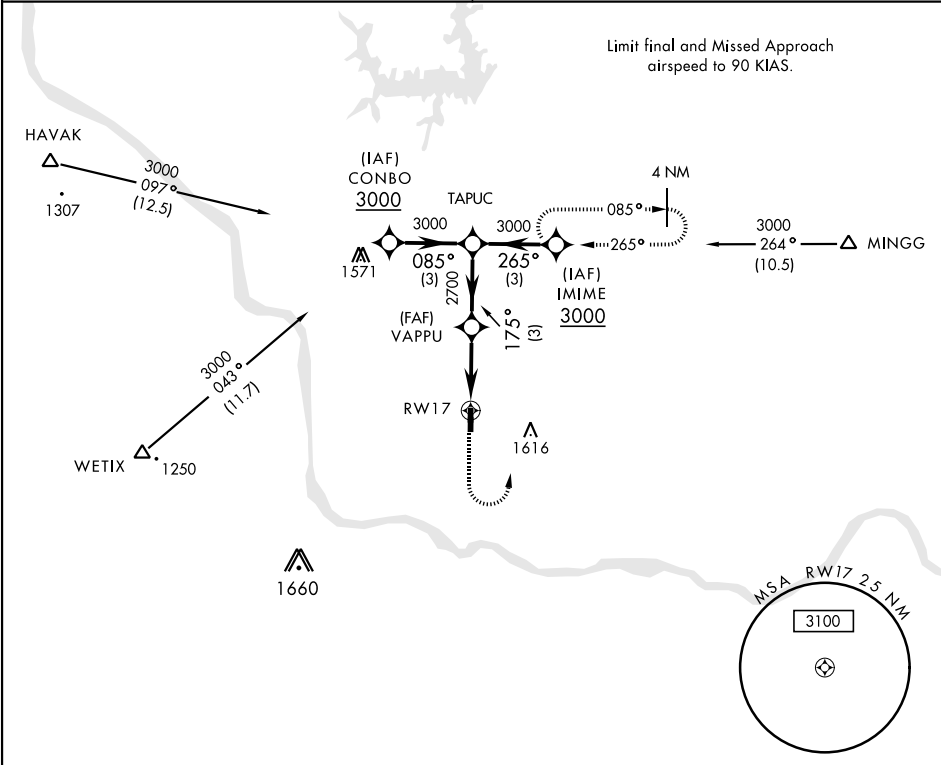
APCH CRS	Rwy Idg
175°	2005
TDZE	1091
Arpt Elev	1091

AL-2497 [USA]

MULDROW AHP (KHMY)

NA Obtain local altimeter setting on CTAF; when not received, use University of Oklahoma Westheimer altimeter setting minimums. DME/DME RNP-0.3 NA	MISSED APPROACH: Climbing left turn to 3000 direct IMIME and hold.
---	--

OKE CITY APP CON 124.2 336.4	MULDROW OPS (Advsy Svc only) 46.9 139.425 227.2 (CTAF)
---------------------------------	---



				ELEV 1091	TDZE 1091
CATEGORY		COPTER			
LNAV MDA		1540-1 449 (500-1)			
UNIVERSITY OF OKLAHOMA WESTHEIMER ALTIMETER SETTING MINIMUMS					
LNAV MDA		1600-1 509 (600-1)			
				LIRL Rwy 17-35 35	

LEXINGTON, OKLAHOMA

35°02'N-97°14'W

MULDROW AHP (KHMY)

Orig 18200

COPTER RNAV (GPS) RWY 17

SC-1, 03 DEC 2020 to 31 DEC 2020

SC-1, 03 DEC 2020 to 31 DEC 2020