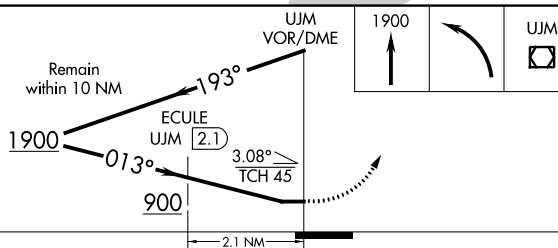
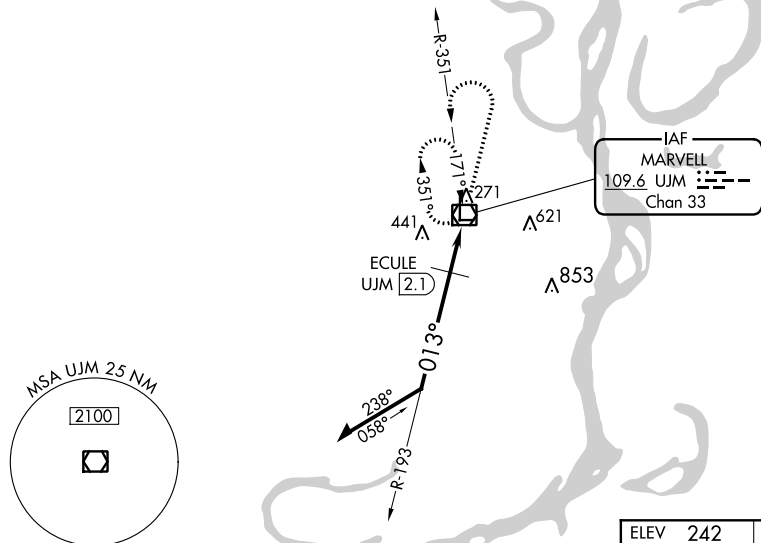


VOR RWY 35
THOMPSON-ROBBINS (HEE)

MISSED APPROACH: Climb to 1900 then left turn direct UJM VOR/DME and hold.

UNICOM
122.8 (CTAF) **L**

CATEGORY	A	B	C	D
S-35	900-1 660 (700-1)		900-1 $\frac{7}{8}$	660 (700-1 $\frac{7}{8}$)
C CIRCLING	900-1 658 (700-1)		980-2 738 (800-2)	980-2 $\frac{1}{4}$ 738 (800-2 $\frac{1}{4}$)
ECULE FIX MINIMUMS				
S-35	700-1 460 (500-1)		700-1 $\frac{3}{8}$	460 (500-1 $\frac{3}{8}$)
C CIRCLING	820-1 578 (600-1)		980-2 738 (800-2)	980-2 $\frac{1}{4}$ 738 (800-2 $\frac{1}{4}$)

