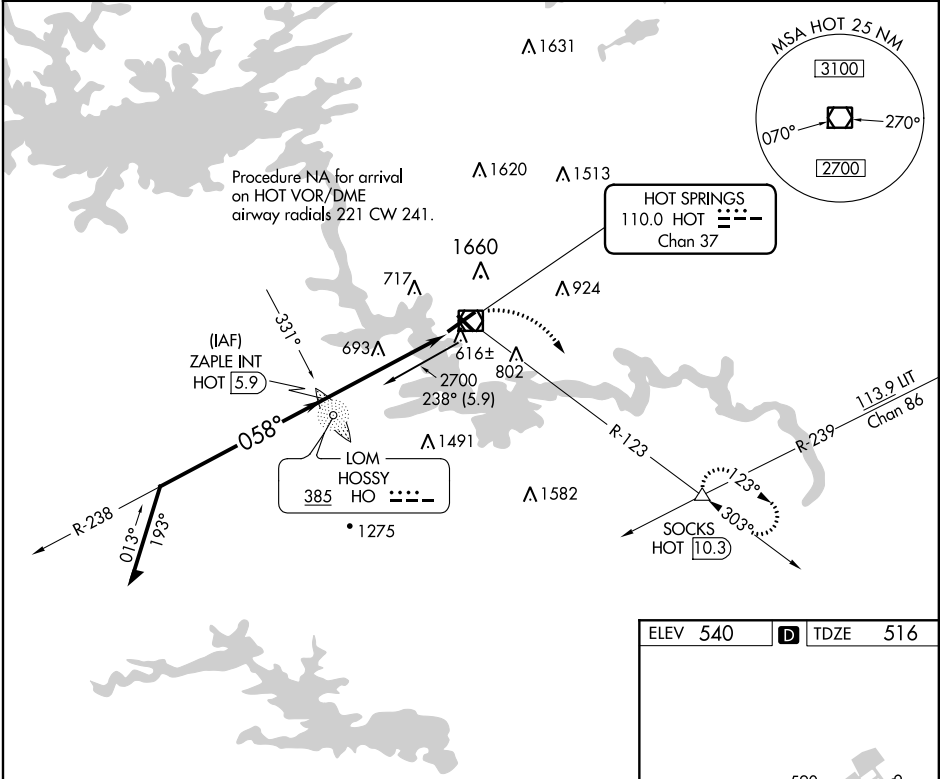


VOR/DME HOT	APP CRS	Rwy Idg
<b>110.0</b>	<b>058°</b>	<b>6595</b>
Chan <b>37</b>		TDZE <b>516</b>
		Apt Elev <b>540</b>

VOR RWY 5  
MEMORIAL FIELD (HOT)

ADF or DME required for procedure entry. ADF or DME required.	MALSR 	MISSED APPROACH: Climbing right turn to 3000 on HOT R-123 to SOCKS INT/HOT 10.3 DME and hold.
Circling NA northwest of Rwys 5 and 23. Circling Rwy 31 NA at night.		

ASOS <b>119.925</b>	MEMPHIS CENTER <b>128.475 377.15</b>	UNICOM <b>123.0 (CTAF) 0</b>
------------------------	---	---------------------------------



ELEV 540		D TDZE 516		
<p>Remain within 10 NM</p> <p>2700 → 238° → ZAPLE INT HOT 5.9 → 2700</p> <p>2700 → 058° → 2200</p> <p>2200 → 3.07° TCH 45 → HOT 2.1 → HOT VOR/DME</p> <p>3.8 NM   1.3   0.8</p>		<p>3000</p> <p>HOT R-123</p> <p>SOCKS</p> <p>△</p> <p>590</p> <p>0.6% UP → 6595 X 150 → 4098 X 100 → 0.4% UP</p> <p>058° to HOT VOR/DME</p>		
CATEGORY	A	B	C	D
S-5	960-1/2 444 (500-1/2)		960-7/8 444 (500-7/8)	
CIRCLING	1080-1 540 (600-1)		1380-2 1/2 840 (900-2 1/2)   1620-3 1080 (1100-3)	

HOT SPRINGS, ARKANSAS  
Amdt 5 15AUG19

MEMORIAL FIELD (HOT)  
VOR RWY 5

HIRL Rwy 5-23  
MIRL Rwy 13-31  
REIL Rwy 13

SC-1, 03 DEC 2020 to 31 DEC 2020

SC-1, 03 DEC 2020 to 31 DEC 2020