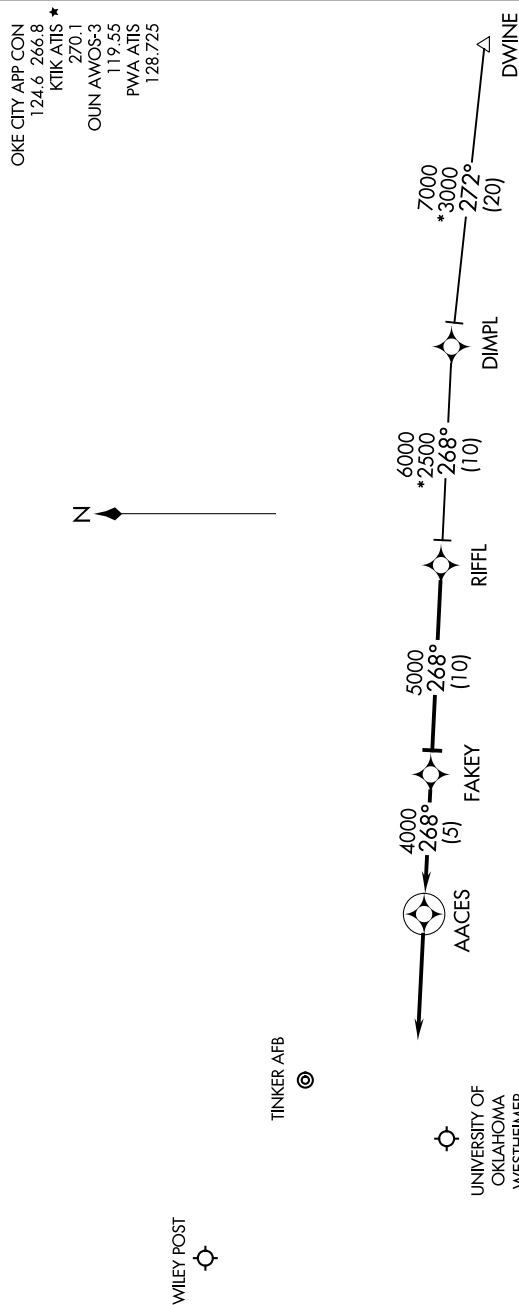


FAKEY ONE ARRIVAL (RNAV)

OKLAHOMA CITY, OKLAHOMA



NOTE: Chart not to scale.

ARRIVAL ROUTE DESCRIPTION

DIMPL TRANSITION (DIMPL.FAKEY1):

DWINE TRANSITION (DWINE.FAKEY1):

From RIFFL on track 268° to FAKEY :

LANDING OUN/KTIK/PWA: From FAKEY on track 268° to AACES, then on track 268°. Expect radar vectors to final approach course.

NOTE: RADAR required.

NOTE: RNAV 1.

NOTE: DME/DME/IRU or GPS required.

FAKEY ONE ARRIVAL (RNAV)

(RIFFL.FAKEY1) 24JUL14

OKLAHOMA CITY, OKLAHOMA