

WAAS CH 42630 W16A	APP CRS 167°	Rwy Idg TDZE Apt Elev	6005 1252 1252
--	------------------------	-----------------------------	---

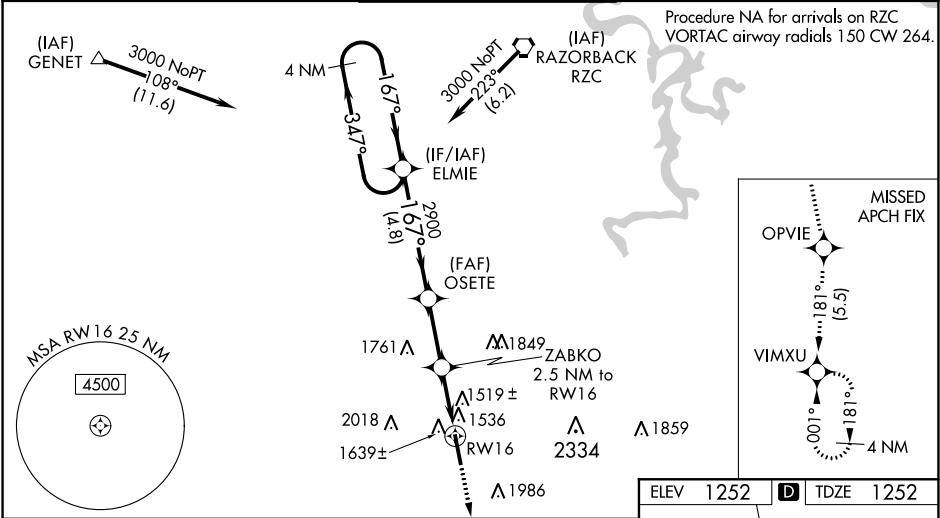
RNAV (GPS) RWY 16
DRAKE FIELD (FYV)

⚠ Baro-VNAV NA when using Springdale altimeter setting. For uncompensated Baro-VNAV systems, LNAV/VNAV NA below -17°C (2°F) or above 54°C (130°F). When VGSI inop, Straight-in/Circling Rwy 16 procedure NA at night. Circling NA east of Rwy 16-34. DME/DME RNP-0.3 NA. Visibility reduction by helicopters NA. When local altimeter setting not received, use Springdale altimeter setting and increase all DA and MDA 40 feet. Increase LPV all Cats visibility $\frac{3}{8}$ mile. For inop ODALS, increase LPV all Cats visibility $\frac{1}{8}$ mile, LNAV/VNAV all Cats visibility $\frac{3}{8}$ mile and LNAV Cats C and D visibility $\frac{1}{4}$ mile. For inop ODALS, when using Springdale altimeter setting, increase LPV all Cats visibility to $\frac{1}{8}$ miles and LNAV Cats C and D visibility to 2 miles. Inop table does not apply when using Springdale altimeter setting to LNAV/VNAV all Cats and LNAV Cats A and B.

ODALS

MISSED APPROACH:
Climb to 4000 direct OPVIE and on track 181° to VIMXU and hold.

ATIS 119.575	RAZORBACK APP CON★ 121.0 244.575	DRAKE TOWER★ 128.0 (CTAF) 371.9	GND CON 121.8	UNICOM 122.95
------------------------	--	---	-------------------------	-------------------------



4 NM Holding Pattern

GP 3.00° TCH 50

4000 OPVIE VIMXU

OSETE ZABKO 2.5 NM to RW16

*LNAV only.

*2080

4.8 NM 2.5 NM 2.5 NM

CATEGORY	A	B	C	D
LPV DA		1714-1 $\frac{3}{8}$	462 (500-1 $\frac{3}{8}$)	
LNAV/VNAV DA		1856-1 $\frac{7}{8}$	604 (700-1 $\frac{7}{8}$)	
LNAV MDA	1900-1	648 (700-1)	1900-1 $\frac{3}{4}$	648 (700-1 $\frac{3}{4}$)
C CIRCLING	2000-1	748 (800-1)	2320-3	1068 (1100-3)

ELEV 1252 **D** TDZE 1252

SC-1, 03 DEC 2020 to 31 DEC 2020

SC-1, 03 DEC 2020 to 31 DEC 2020