

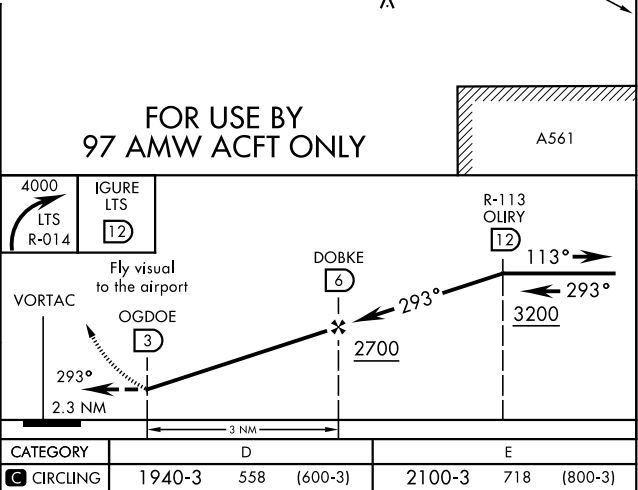
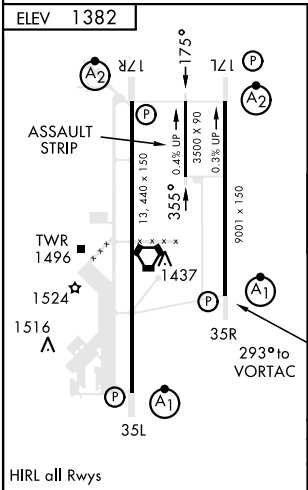
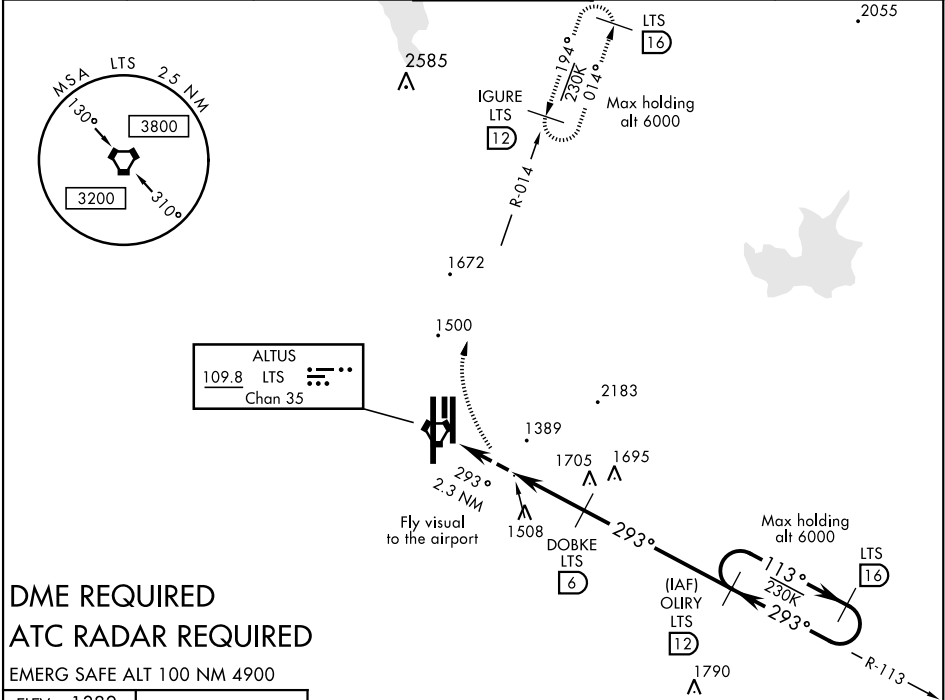
ALTUS, OKLAHOMA

VOR or TACAN-D

VORTAC LTS <b>109.8</b> Chan <b>35</b>	APCH CRS <b>293°</b>	Rwy Idg TDZE Arpt Elev <b>N/A</b> <b>N/A</b> <b>1382</b>	AL-482 [USAF]	ALTUS AFB (KLTS)
--	-------------------------	---	---------------	------------------

<b>▼</b> Circling not authorized W of Rwy 17R-35L.	MISSED APPROACH: Climbing right turn to 4000, intercept LTS VORTAC R-014 to IGUIRE and hold.
--	--

ATIS ★ <b>109.8 273.5</b>	FORT WORTH CENTER <b>133.5 350.35</b>	ALTUS APP CON <b>125.1 353.7</b>	ALTUS TOWER ★ <b>119.65 254.4</b>	GND CON <b>121.85 275.8</b>	CLNC DEL <b>120.65 284.7</b>
------------------------------	--	-------------------------------------	--------------------------------------	--------------------------------	---------------------------------



ALTUS, OKLAHOMA  
Amdt 1 07DEC17

34°40'N-99°16'W

ALTUS AFB (KLTS)

VOR or TACAN-D

SC-1, 03 DEC 2020 to 31 DEC 2020

SC-1, 03 DEC 2020 to 31 DEC 2020