

ALTUS, OKLAHOMA

RNAV (GPS)-B

APCH CRS 293°	Rwy Idg TDZE Arprt Elev	N/A N/A 1382
-------------------------	-------------------------------	---

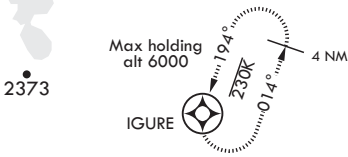
AL-482 (USAF)

ALTUS AFB (KLTS)

▼ Circling NA W of Rwy 17R-35L	MISSED APPROACH: Climbing right turn to 4000 direct IGUIRE and hold.
---------------------------------------	--

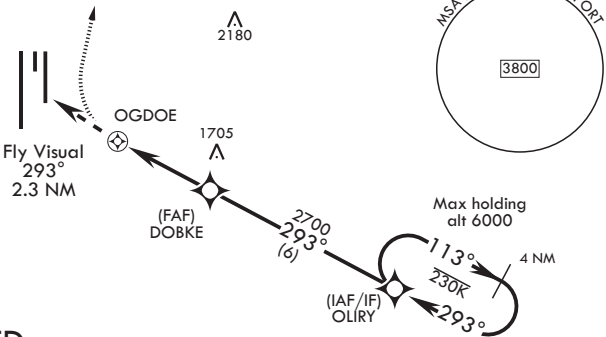
ATIS★ 109.8 273.5	FORT WORTH CENTER 133.5 350.35	APP CON 125.1 353.7	TOWER★ 119.65 254.4	GND CON 121.85 275.8	CLNC DEL 120.65 284.7
-----------------------------	--	-------------------------------	-------------------------------	--------------------------------	---------------------------------

RNP APCH
DME/DME RNP-0.3 NA



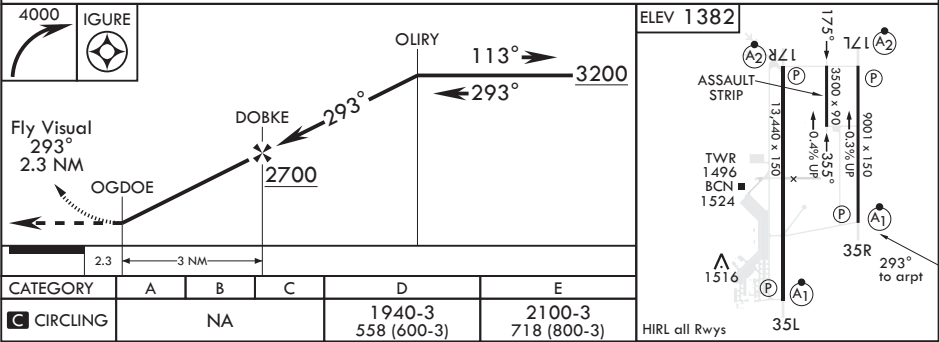
2055

FOR USE BY 97
AMW ACFT ONLY



ATC RADAR REQUIRED

EMERG SAFE ALT 100 NM 4900



ALTUS, OKLAHOMA

34°40'N - 99°16'W

ALTUS AFB (KLTS)

Amdt 2 15AUG19

RNAV (GPS)-B