

19283

OKKIE TWO DEPARTURE (RNAV) (OKKIE2•OKKIE)

ALTUS AFB (KLTS)

ALTUS, OKLAHOMA

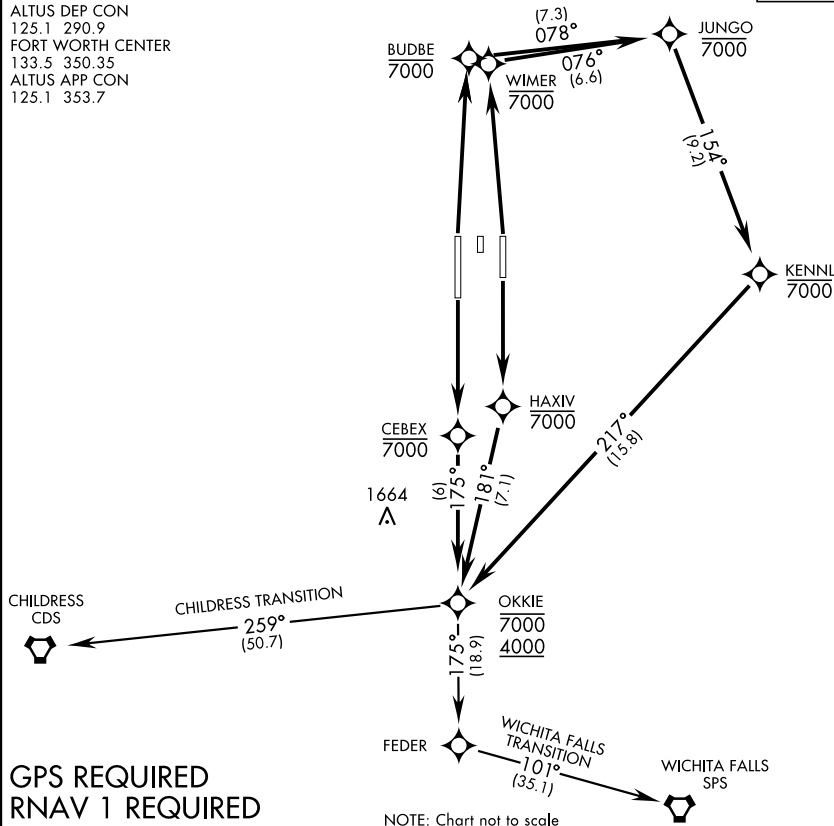
ATIS ★ 109.8 273.5
CLNC DEL
120.65 284.7
GND CON
121.85 275.8
ALTUS TOWER ★
119.65 254.4
ALTUS DEP CON
125.1 290.9
FORT WORTH CENTER
133.5 350.35
ALTUS APP CON
125.1 353.7

SHL-482 [USAF]

Rwy	Knots	60	120	180	240	300	360
35L/R	V/V(fpm)	300	600	900	1200	1500	1800

Minimum Climb to 1900

TOP ALTITUDE:
9000



GPS REQUIRED
RNAV 1 REQUIRED

NOTE: Chart not to scale



DEPARTURE ROUTE DESCRIPTION

TAKE-OFF RWY 17L: Climb direct HAXIV, then on track 181° to OKKIE. Cross OKKIE between 4000 and 7000, then via transition or assigned route. Maintain 9000. Expect filed alt 10 minutes after departure.

TAKE-OFF RWY 17R: Climb direct CEBEX, then on track 175° to OKKIE. Cross OKKIE between 4000 and 7000, then via transition or assigned route. Maintain 9000. Expect filed alt 10 minutes after departure.

TAKE-OFF RWY 35L: Climb direct BUDBE, then on depicted route to OKKIE. Cross OKKIE between 4000 and 7000, then via transition or assigned route. Maintain 9000. Expect filed alt 10 minutes after departure.

TAKE-OFF RWY 35R: Climb direct WIMER, then on depicted route to OKKIE. Cross OKKIE between 4000 and 7000, then via transition or assigned route. Maintain 9000. Expect filed alt 10 minutes after departure.

CHILDRESS TRANSITION (OKKIE2•CDS): Track 259° to CDS.

WICHITA FALLS TRANSITION (OKKIE2•SPS): Track 175° to FEDER, then via 101° track to SPS.

OKKIE TWO DEPARTURE (RNAV) (OKKIE2•OKKIE)

Orig 10OCT19

ALTUS, OKLAHOMA

ALTUS AFB (KLTS)