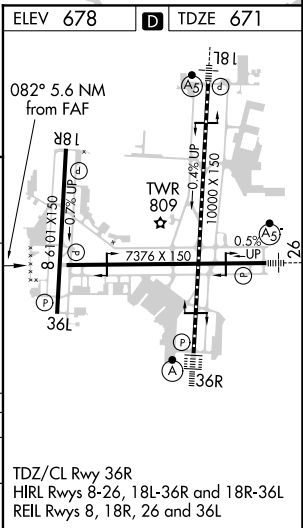
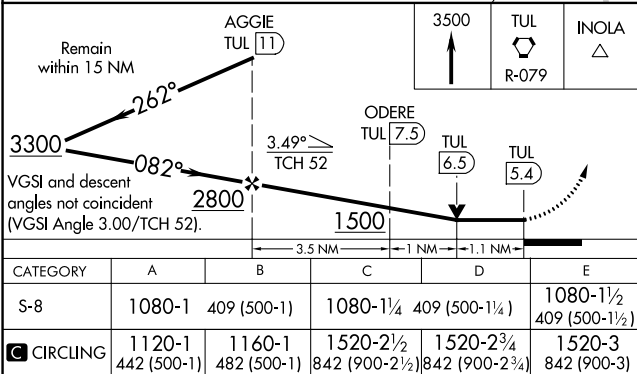
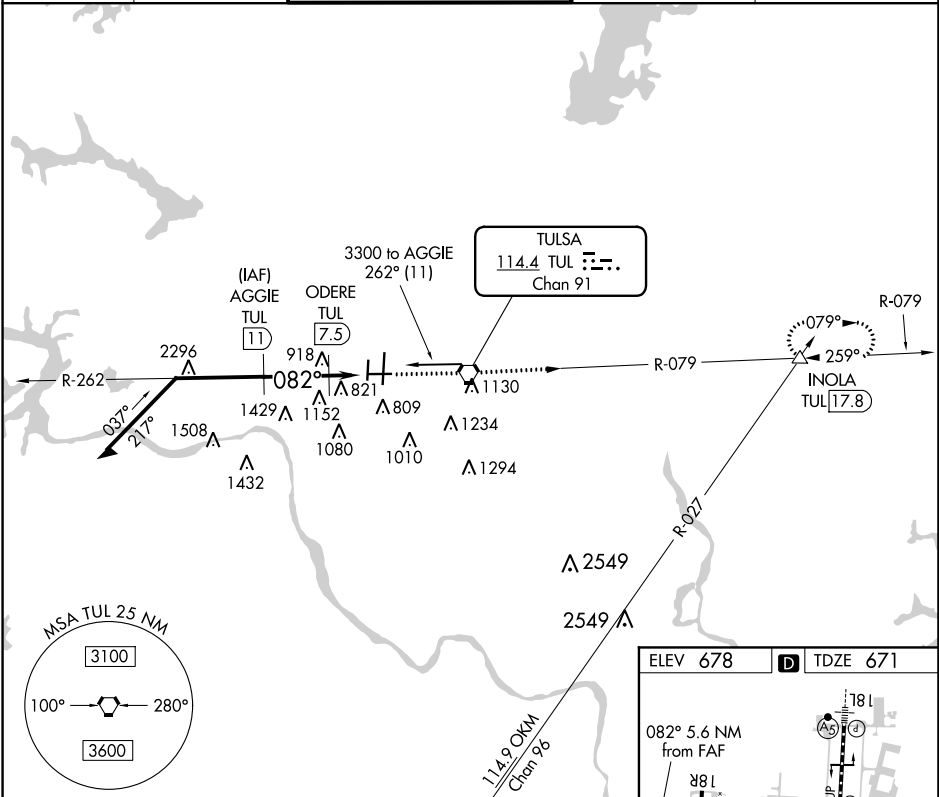


VORTAC TUL <b>114.4</b> Chan 91	APP CRS <b>082°</b>	Rwy Idg TDZE Apt Elev <b>7376</b> <b>671</b> <b>678</b>
---------------------------------------	------------------------	--

VOR/DME RWY 8  
TULSA INTL (TUL)

 ASR	Circling NA for Cat E south of Rwy 8-26. Helicopter visibility reduction below ¾ SM NA. Autopilot coupled approach NA.	MISSED APPROACH: Climb to 3500 direct TUL VORTAC then via TUL R-079 to INOLA INT/TUL 17.8 DME and hold.
---------	--	--

D-ATIS <b>124.9 377.2</b>	TULSA APP CON <b>124.0 338.3</b>	TULSA TOWER <b>121.2 310.8</b> (Rwys 18L-36R, 8-26) <b>118.7 257.8</b> (Rwy 18R-36L)	GND CON <b>121.9 348.6</b>	CLNC DEL <b>134.05 284.7</b>
------------------------------	-------------------------------------	--	-------------------------------	---------------------------------



SC-1, 03 DEC 2020 to 31 DEC 2020

SC-1, 03 DEC 2020 to 31 DEC 2020