

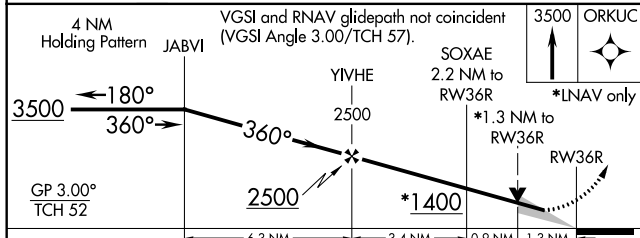
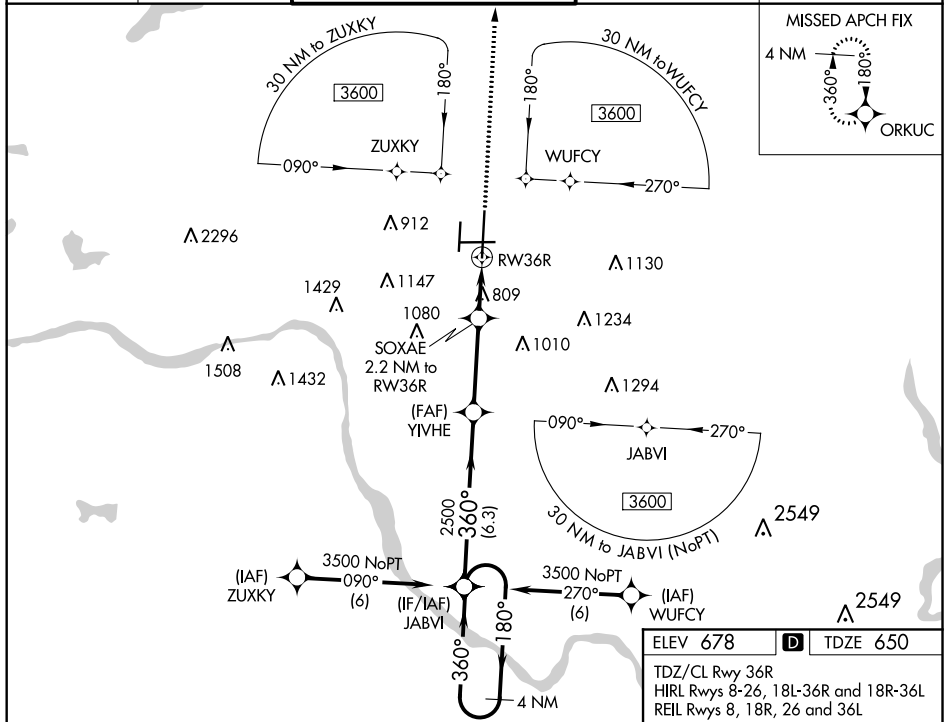


WAAS CH 82214 W36A	APP CRS 360°	Rwy Idg 10000 TDZE 650 Apt Elev 678
--	------------------------	--

RNAV (GPS) RWY 36R
TULSA INTL (TUL)

	<p>For uncompensated Baro-VNAV systems, LNAV/VNAV NA below -13°C (9°F) or above 54°C (130°F). Circling NA for Cat E south of Rwy 8-26. DME/DME RNP-0.3 NA.</p> <p>For inop ALSF-2, increase LPV Cat E visibility to RVR 4000, LNAV/VNAV all Cats visibility to 1/2 mile, and LNAV Cats C/D/E visibility to 1/3 mile.</p>		<p>MISSED APPROACH: Climb to 3500 direct ORKUC and hold.</p>
---	--	---	---

D-ATIS 124.9 377.2	TULSA APP CON 124.0 338.3	TULSA TOWER 121.2 310.8 (Rwys 18L-36R, 8-26) 118.7 257.8 (Rwy 18R-36L)	GND CON 121.9 348.6	CLNC DEL 134.05 284.7
------------------------------	-------------------------------------	--	-------------------------------	---------------------------------



CATEGORY		A		B		C		D		E	
LPV	DA	850/18 200 (200-½)									
LNAV/ VNAV	DA	1145-1¼ 495 (500-1¼)									
LNAV	MDA	1120/24 470 (500-½)				1120/50 470 (500-1)					
C CIRCLING		1120-1 442 (500-1)		1160-1 482 (500-1)		1520-2½ 842 (900-2½)		1520-2¾ 842 (900-2¾)		1520-3 842 (900-3)	

