

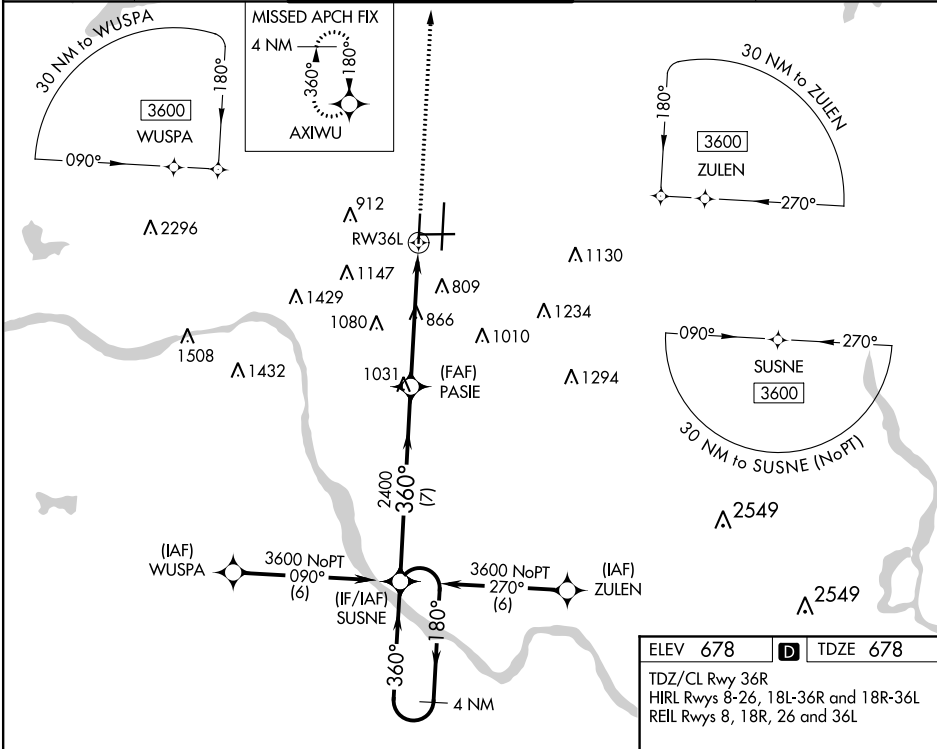
APP CRS	Rwy Idg	6101
360°	TDZE	678
	Apt Elev	678

RNAV (GPS) RWY 36L

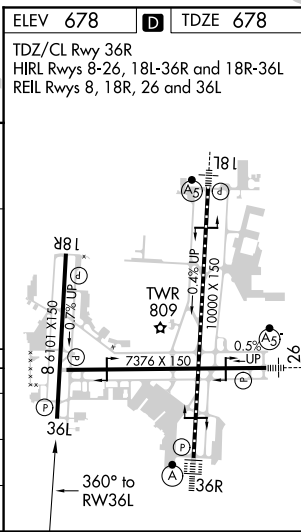
TULSA INTL (TUL)

<div><div>▼</div><div>▲</div><div>ASR</div></div> <div>For uncompensated Baro-VNAV systems, LNAV/VNAV NA below -13°C (9°F) or above 54°C (130°F). DME/DME RNP-0.3 NA. Simultaneous approach authorized with ILS or LOC Rwy 36R and ILS Rwy 36R (Cat II). LNAV procedure NA during simultaneous operations. Use of FD or AP providing RNAV track guidance required during simultaneous operations.</div>	MISSED APPROACH: Climb to 3500 direct AXIWU and hold.
---	--

D-ATIS 124.9 377.2	TULSA APP CON 124.0 338.3	TULSA TOWER 121.2 310.8 (Rwys 18L-36R, 8-26) 118.7 257.8 (Rwy 18R-36L)	GND CON 121.9 348.6	CLNC DEL 134.05 284.7
-----------------------	------------------------------	--	------------------------	--------------------------



4 NM Holding Pattern		3500 AXIWU	
GP 3.00° TCH 50		*1.4 NM to RW36L *LNAV only	
7 NM		3.8 NM	
CATEGORY	A	B	C
LNAV/VNAV DA	1105-1 3/8 427 (500-1 3/8)		
LNAV MDA	1180-1 502 (600-1) 1180-1 3/8 502 (600-1 3/8)		
CIRCLING	1180-1 502 (600-1) 1520-2 1/2 842 (900-2 1/2) 1520-2 3/4 842 (900-2 3/4)		



SC-1, 03 DEC 2020 to 31 DEC 2020

SC-1, 03 DEC 2020 to 31 DEC 2020