

|  |                        |   |
|--|------------------------|---|
| WAAS<br>Ch <b>53699</b><br><b>W22A</b> | APP CRS<br><b>220°</b> | Rwy Idg <b>6601</b><br>TDZE <b>384</b><br>Apt Elev <b>390</b> |
|--|------------------------|---|

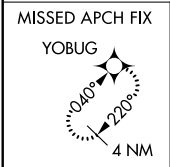
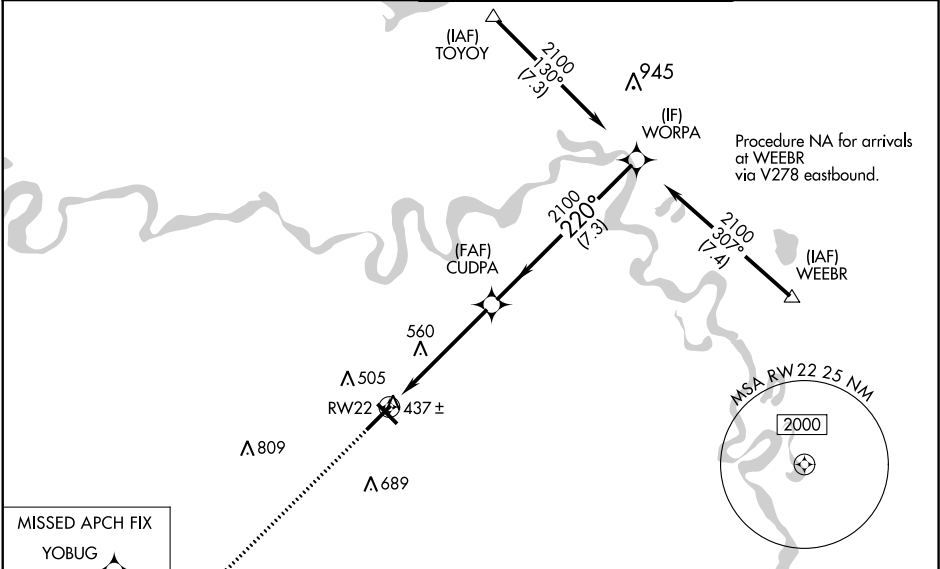
**RNAV (GPS) RWY 22**  
TEXARKANA RGNL-WEBB FIELD (TXK)

**⚠** DME/DME RNP-0.3 NA. For uncompensated Baro-VNAV systems, LNAV/VNAV NA below -1.5°C (5°F) or above 48°C (118°F). When local altimeter setting not received, use J Lynn Helms Sevier County altimeter setting and increase all DA/MDA 100 feet, increase LPV all Cats visibility ¼ mile, LNAV/VNAV all Cats visibility ½ mile, LNAV and circling Cat C and D visibility ¼ mile. Baro-VNAV and VDP NA when using J Lynn Helms Sevier County altimeter setting. For inoperative MALSR when using J Lynn Helms Sevier County altimeter setting increase LPV all Cats visibility to 1¼.

**MALSR**

**MISSED APPROACH:**  
Climb to 2000 direct YOBUG and hold.

|                      |   |  |                           |
|----------------------|---|--|---------------------------|
| ATIS<br><b>120.2</b> | FORT WORTH CENTER<br><b>123.925 269.475</b> | TEXARKANA TOWER ★<br><b>123.875 (CTAF) 0 235.625</b> | GND CON<br><b>119.225</b> |
|----------------------|---|--|---------------------------|



|              |                      |                      |                        |                       |
|--------------|----------------------|----------------------|------------------------|-----------------------|
| 2000         | YOBUG                |                      |                        |                       |
| * LNAV only. |                      |                      |                        |                       |
|              |                      | CUDPA                | WORPA                  | Procedure Turn NA     |
|              |                      | 2100                 | 2100                   |                       |
|              |                      | 2100                 |                        | GP 3.00° TCH 45       |
|              | 1.2                  | 4 NM                 | 7.3 NM                 |                       |
| CATEGORY     | A                    | B                    | C                      | D                     |
| LPV DA       |                      | 634-1½               | 250 (300-1½)           |                       |
| LNAV/VNAV DA |                      | 687-1½               | 303 (300-1½)           | 687-¾<br>303 (300-¾)  |
| LNAV MDA     | 820-1½               | 436 (500-1½)         | 820-¾<br>436 (500-¾)   | 820-1<br>436 (500-1)  |
| CIRCLING     | 820-1<br>430 (500-1) | 860-1<br>470 (500-1) | 900-1½<br>510 (600-1½) | 1000-2<br>610 (700-2) |

