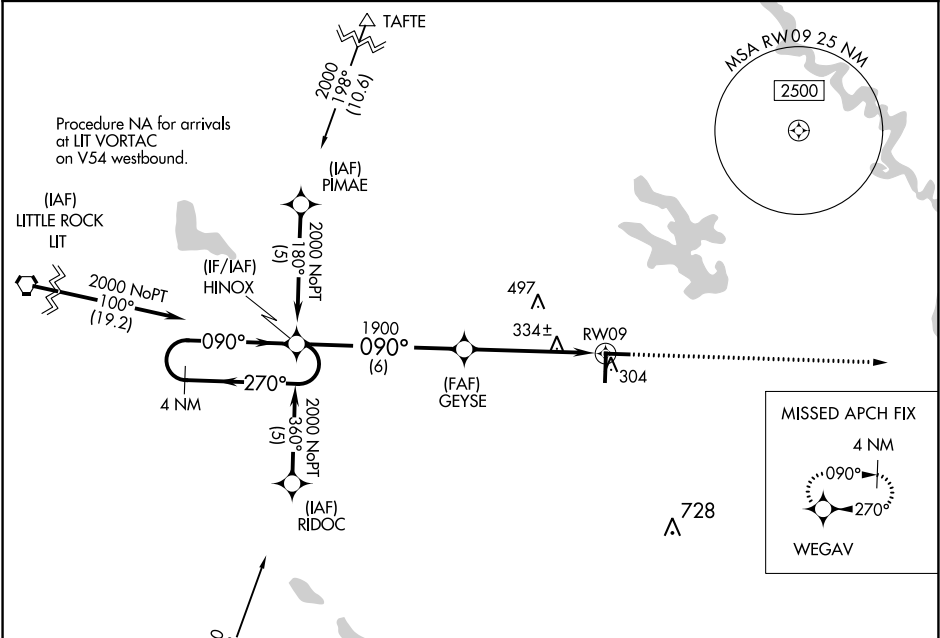


APP CRS	Rwy Idg	5002
090°	TDZE	222
	Apt Elev	224

RNAV (GPS) RWY 9
STUTT GART MUNI CARL HUMPHREY FIELD (SGT)

<p>⚠ DME/DME RNP-0.3 NA. When local altimeter setting not received, use Bill and Hillary Clinton National/Adams Field altimeter setting and increase all MDAs 100 feet. VDP NA when using Bill and Hillary Clinton National/Adams Field altimeter setting.</p>	<p>MISSED APPROACH: Climb to 2000 direct WEGAV and hold.</p>
---	---

AWOS-3PT 119.025	LITTLE ROCK APP CON 135.4 353.6	CLNC DEL 123.7	UNICOM 122.8 (CTAF) 0
---------------------	------------------------------------	-------------------	---------------------------------



ELEV 224		TDZE 222	
090° to RW09		81 27 5002 X 150 6015 X 100 36 279	
4 NM Holding Pattern		2000 WEGAV	
2000 ← 270° 090° →		1900 3.05° TCH 45 1.0	
6 NM		4.1 NM	
CATEGORY	A	B	C
LNNAV MDA	600-1	378 (400-1)	600-1¼ 378 (400-1¼)
CIRCLING	660-1 436 (500-1)	680-1 456 (500-1)	680-1½ 456 (500-1½) 780-2 556 (600-2)