

VOR IRW 114.1 Chan 88	APP CRS 190°	Rwy Idg TDZE 1287 Apt Elev 1296
---	------------------------	---

VOR RWY 17L

WILL ROGERS WORLD (OKC)

⚠

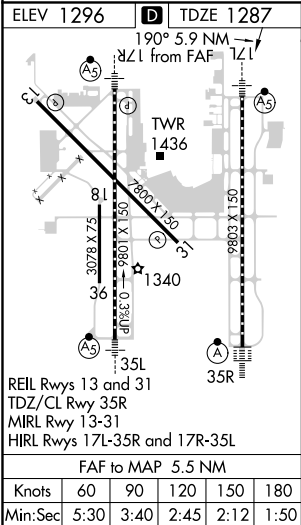
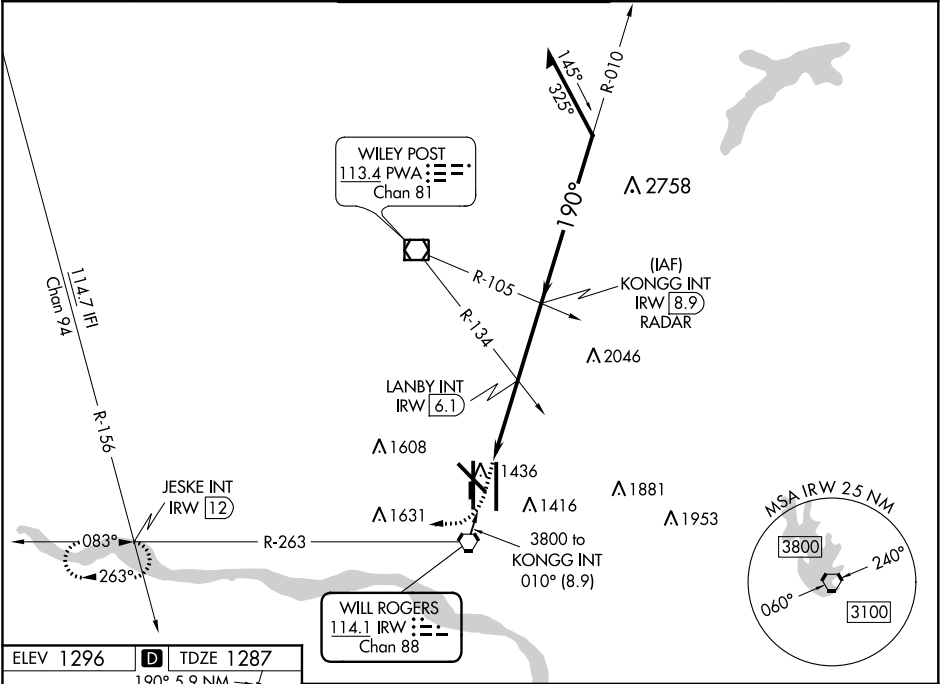
Cat E procedure turn NA. Inoperative table does not apply to S-17L all categories and LANBY FIX minimums S-17L Cat E; increase LANBY FIX minimums Cat D visibility to RVR 6000 for inoperative MALSRS.

MALSRS

AS

MISSED APPROACH: Climb to 2000 then climbing right turn to 3100 via IRW VORTAC R-263 to JESKE INT/12 DME and hold.

D-ATIS 125.85	OKE CITY APP CON 124.6 266.8	ROGERS TOWER 119.35 269.45	GND CON 121.9 348.6	CLNC DEL 124.35
-------------------------	--	--------------------------------------	-------------------------------	---------------------------



2000 ↑	3100 IRW R-263	JESKE INT	KONGG INT IRW [8.9] RADAR			Remain within 10 NM
IRW 3.4		LANBY INT IRW 6.1	010°			3800
		≤ 3.10° TCH 59	190°			3300
		2300	3300			
0.5		2.7 NM	2.8 NM			
CATEGORY	A	B	C	D	E	
S-17L	2300/60 1013(1100-1½)	2300-1½ 1013(1100-1½)	2300-3	1013(1100-3)		
C CIRCLING	2300-1¼ 1004(1100-1¼)	2300-1½ 1004(1100-1½)	2300-3	1004(1100-3)		
LANBY FIX MINIMUMS						
S-17L	1680/24 393(400-½)		1680/50 393(400-1)	1680-1½ 393(400-1½)		
C CIRCLING	1760-1	464(500-1)	1960-1¾ 664(700-1¾)	2000-2¼ 704(800-2¼)	2240-3 944(1000-3)	