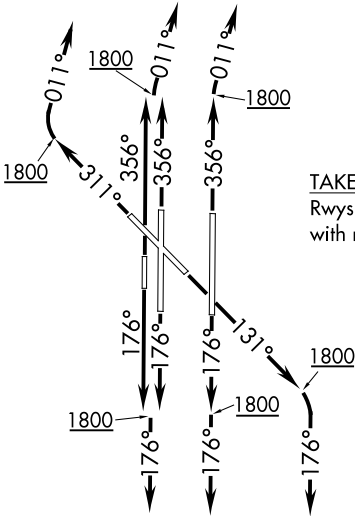


TEBRD THREE DEPARTURE (RNAV)

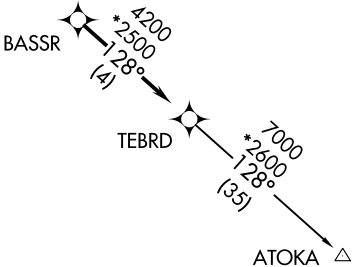
TOP ALTITUDE:  
ASSIGNED BY ATC

D-ATIS 125.85  
CLNC DEL 124.35  
GND CON 121.9 348.6  
ROGERS TOWER 119.35 269.45  
OKE CITY DEP CON 124.2 336.4



TAKEOFF MINIMUMS:  
Rwys 13, 17L/R, 18, 31, 35L/R, 36: Standard  
with minimum climb of 500' per NM to 1800.

NOTE: RADAR required.  
NOTE: DME/DME/IRU or GPS required.  
NOTE: RNAV 1.



NOTE: Chart not to scale.



DEPARTURE ROUTE DESCRIPTION

TAKEOFF RWY 13: Climb heading 131° to 1800, then right turn heading 176° or as assigned by ATC, expect RADAR vectors to BASSR, thence . . .  
TAKEOFF RWYS 17L/R, 18: Climb heading 176° to 1800, then heading 176° or as assigned by ATC, expect RADAR vectors to BASSR, thence . . .  
TAKEOFF RWY 31: Climb heading 311° to 1800, then right turn heading 011° or as assigned by ATC, expect RADAR vectors to BASSR, thence . . .  
TAKEOFF RWYS 35L/R, 36: Climb heading 356° to 1800, then right turn heading 011° or as assigned by ATC, expect RADAR vectors to BASSR, thence . . .

. . . on track 128° to TEBRD, then on (transition). Maintain 5000 or as assigned by ATC. Expect filed altitude 10 minutes after departure.

ATOKA TRANSITION (TEBRD3.ATOKA)

TEBRD THREE DEPARTURE (RNAV)

(TEBRD3.TEBRD) 07DEC17

OKLAHOMA CITY, OKLAHOMA  
WILL ROGERS WORLD (OKC)