

WAAS CH 56202 W35A	APP CRS 356°	Rwy Idg 9800 TDZE 1276 Apt Elev 1296
--	------------------------	---

RNAV (GPS) Y RWY 35L

WILL ROGERS WORLD (OKC)

⚠

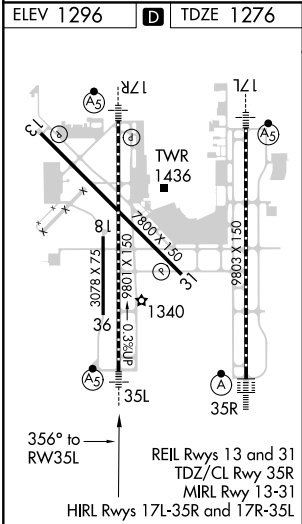
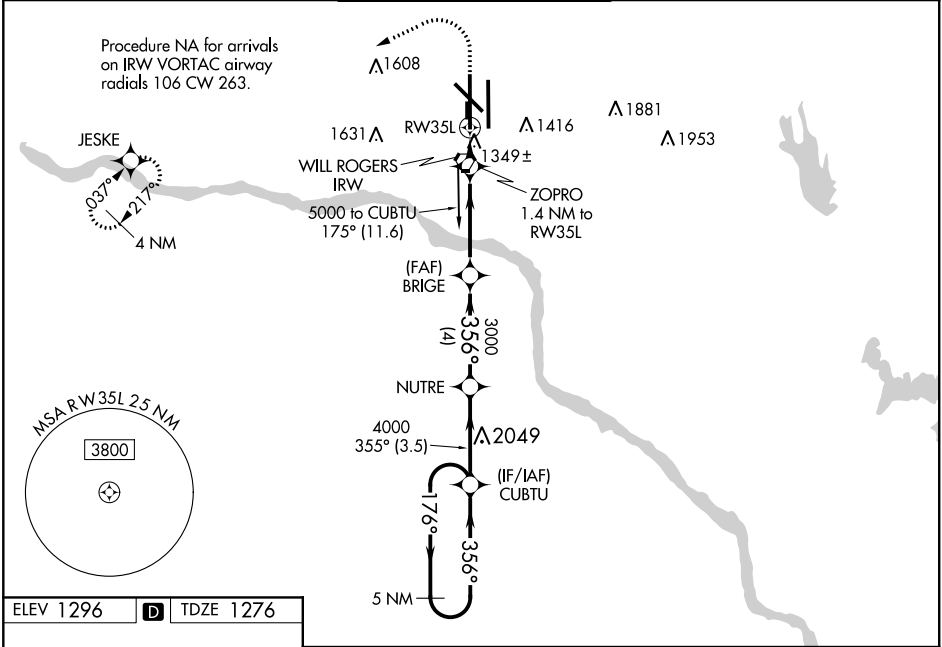
ASR

For uncompensated Baro-VNAV systems, LNAV/VNAV NA below -12°C (11°F) or above 54°C (130°F). DME/DME RNP-0.3 NA. For inop MALSR, increase LPV and LNAV/VNAV Cat E visibility to RVR 4000. Increase LNAV Cat A/B visibility to RVR 5500 and Cat C/D/E to RVR 5000. Simultaneous approach authorized with Rwy 35R. LNAV procedure NA during simultaneous operations. Use of FD or AP providing RNAV track guidance required during simultaneous operations. **RVR 1800 authorized with use of FD or AP or HUD to DA.

MALSR

MISSED APPROACH:
Climb to 2000 then climbing left turn to 5000 direct JESKE and hold.

D-ATIS 125.85	OKE CITY APP CON 124.6 266.8	ROGERS TOWER 119.35 269.45	GND CON 121.9 348.6	CLNC DEL 124.35
-------------------------	--	--------------------------------------	-------------------------------	---------------------------



<div>2000</div> <div>5000</div>		<div>JESKE</div>			
<div>*LNAV only.</div>		<div>ZOPRO</div> <div>1.4 NM to RW35L</div>		<div>BRIGE</div> <div>3000</div>	
<div>*0.9 NM to RW35L</div>		<div>*1740</div>		<div>3000</div>	
<div>0.9</div>		<div>0.5</div>		<div>3.9 NM</div>	
<div>CATEGORY</div>		<div>A</div>		<div>B</div>	
<div>LPV DA**</div>		<div>1476/24</div>		<div>200 (200-½)</div>	
<div>LNAV/VNAV DA</div>		<div>1543/24</div>		<div>267 (300-½)</div>	
<div>LNAV MDA</div>		<div>1600/24</div>		<div>1600/26 324 (400-½)</div>	
<div>CIRCLING</div>		<div>1740-1</div> <div>444 (500-1)</div>		<div>1760-1</div> <div>464 (500-1)</div>	
		<div>1960-1¾</div> <div>664 (700-1¾)</div>		<div>2000-2¼</div> <div>704 (800-2¼)</div>	
		<div>2240-3</div> <div>944 (1000-3)</div>			