

RNAV (RNP) Z RWY 35R  
WILL ROGERS WORLD (OKC)

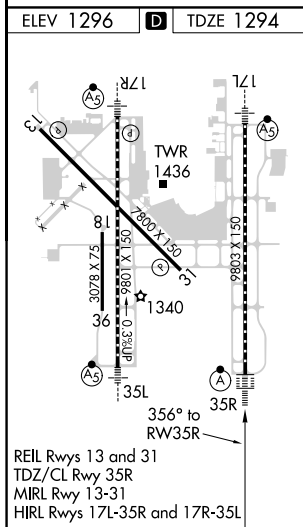
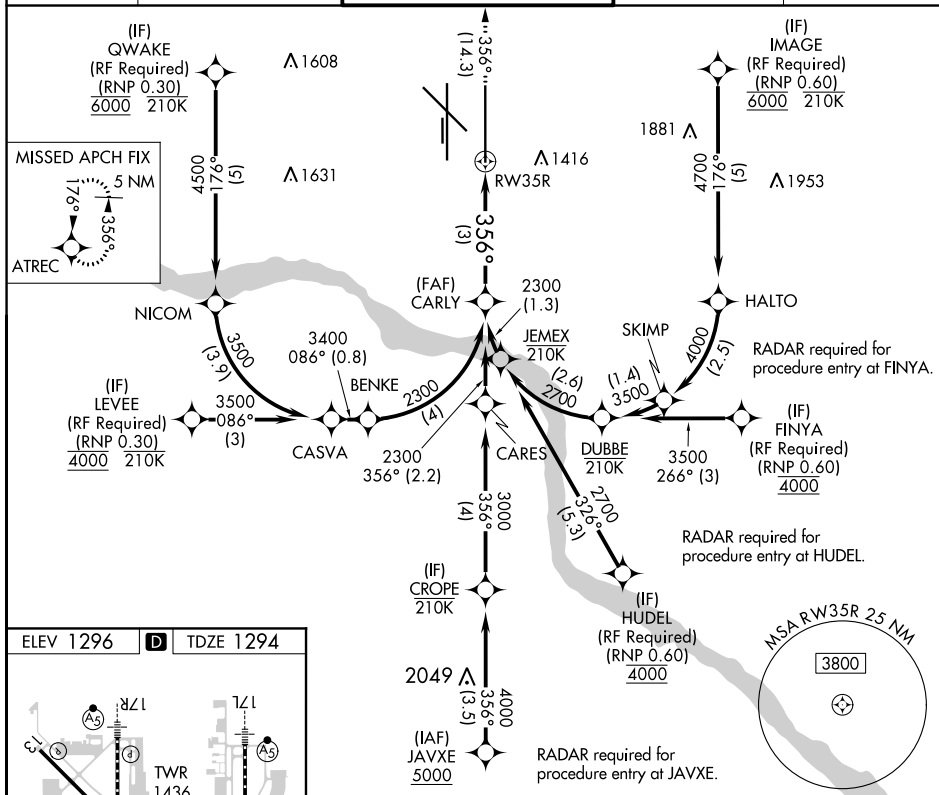
|                        |                             |   |
|------------------------|-----------------------------|---|
| APP CRS<br><b>356°</b> | Rwy Idg<br>TDZE<br>Apt Elev | <b>9802</b><br><b>1294</b><br><b>1296</b> |
|------------------------|-----------------------------|---|

**T** For uncompensated Baro-VNAV systems, procedure NA below -12°C (11°F) or above 54°C (130°F). GPS required. Simultaneous approach authorized with Rwy 35L. Use of FD or AP providing RNAV track guidance required during simultaneous operations.

ALSF-2

**MISSED APPROACH:**  
Climb to 5000 on  
track 356° to ATREC  
and hold, continue  
climb-in-hold to 5000.

|        |                  |               |             |          |
|--------|------------------|---------------|-------------|----------|
| D-ATIS | OKE CITY APP CON | ROGERS TOWER  | GND CON     | CLNC DEL |
| 125.85 | 124.6 266.8      | 119.35 269.45 | 121.9 348.6 | 124.35   |



See planview for multiple IF locations.

| CATEGORY    | A | B       | C                         | D |
|-------------|---|---------|---------------------------|---|
| RNP 0.16 DA |   | 1570/24 | 276 (300- $\frac{1}{2}$ ) |   |
| RNP 0.30 DA |   | 1674/39 | 380 (400- $\frac{3}{4}$ ) |   |

**AUTHORIZATION REQUIRED**

RNAV (RNP) Z RWY 35R