
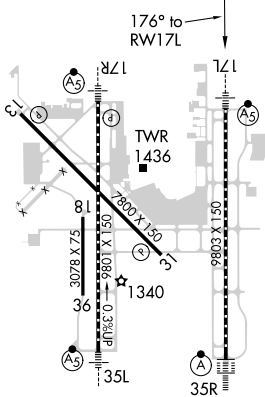
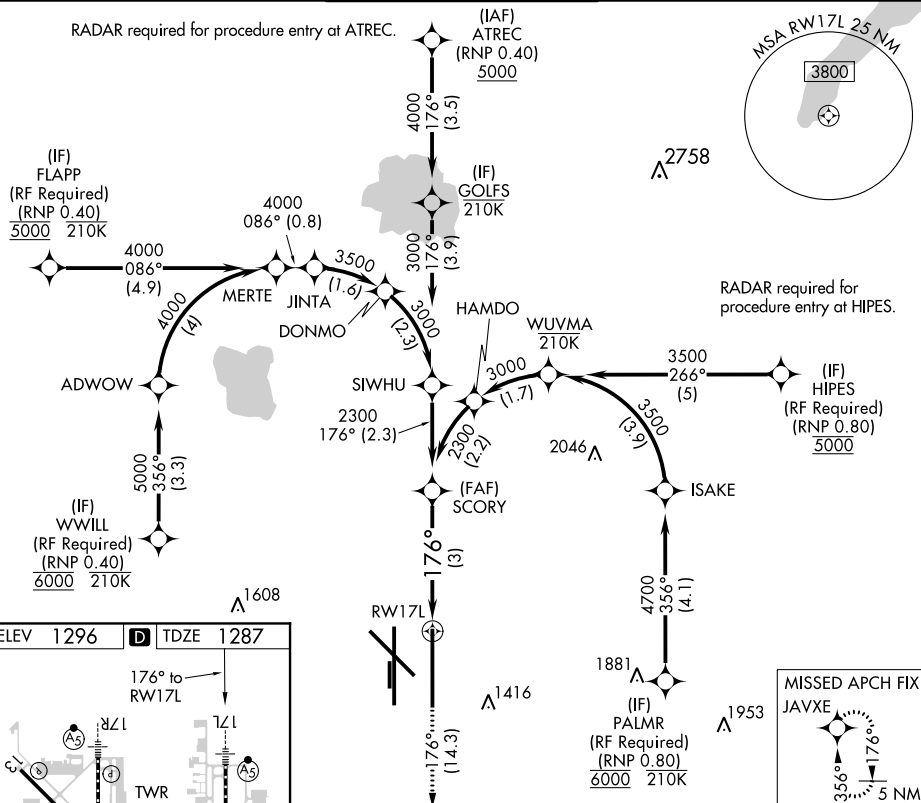


RNAV (RNP) Z RWY 17L
WILL ROGERS WORLD (OKC)

<p>MALSR</p> 	<p>MISSED APPROACH: Climb to 5000 on track 176° to JAVXE and hold, continue climb-in-hold to 5000.</p>
--	---

RADAR required for procedure entry at ATREC.



REIL Rwy 13 and 31
TDZ/CL Rwy 35R
MIRL Rwy 13-31
HIRL Rwy 17L-35R and 17R-35L

See planview for multiple IF locations.

CATEGORY	A	B	C	D
RNP 0.11 DA		1555/24	268 (300-½)	
RNP 0.20 DA		1643/34	356 (400-¾)	
RNP 0.30 DA		1724/49	437 (500-1)	

AUTHORIZATION REQUIRED

AUTHORIZATION REQUIRED