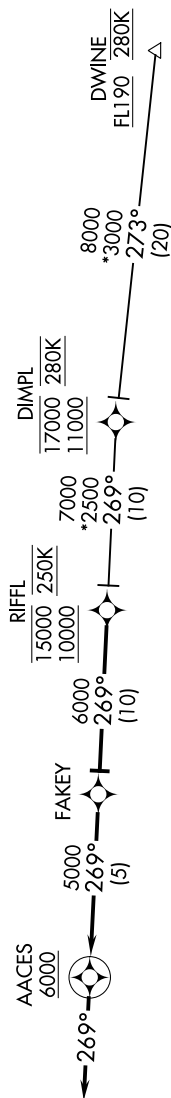


OKLAHOMA CITY, OKLAHOMA



NOTE: DME/DME/IRU or GPS required.

NOTE: Chart not to scale.

ARRIVAL ROUTE DESCRIPTION

DIMPL TRANSITION (DIMPL.RIFFL3)
DWINE TRANSITION (DWINE.RIFFL3)

From RIFFL on track 269° to FAKEY.

LANDING RWYS 17L/R, 35L/R: From FAKEY on track 269° to cross AACES at or above 6000, then on track 269°. Expect RADAR vectors to final approach course.

OKLAHOMA CITY, OKLAHOMA
WILL ROGERS WORLD (OKC)

(RIFFL.RIFFL3) 07DEC17