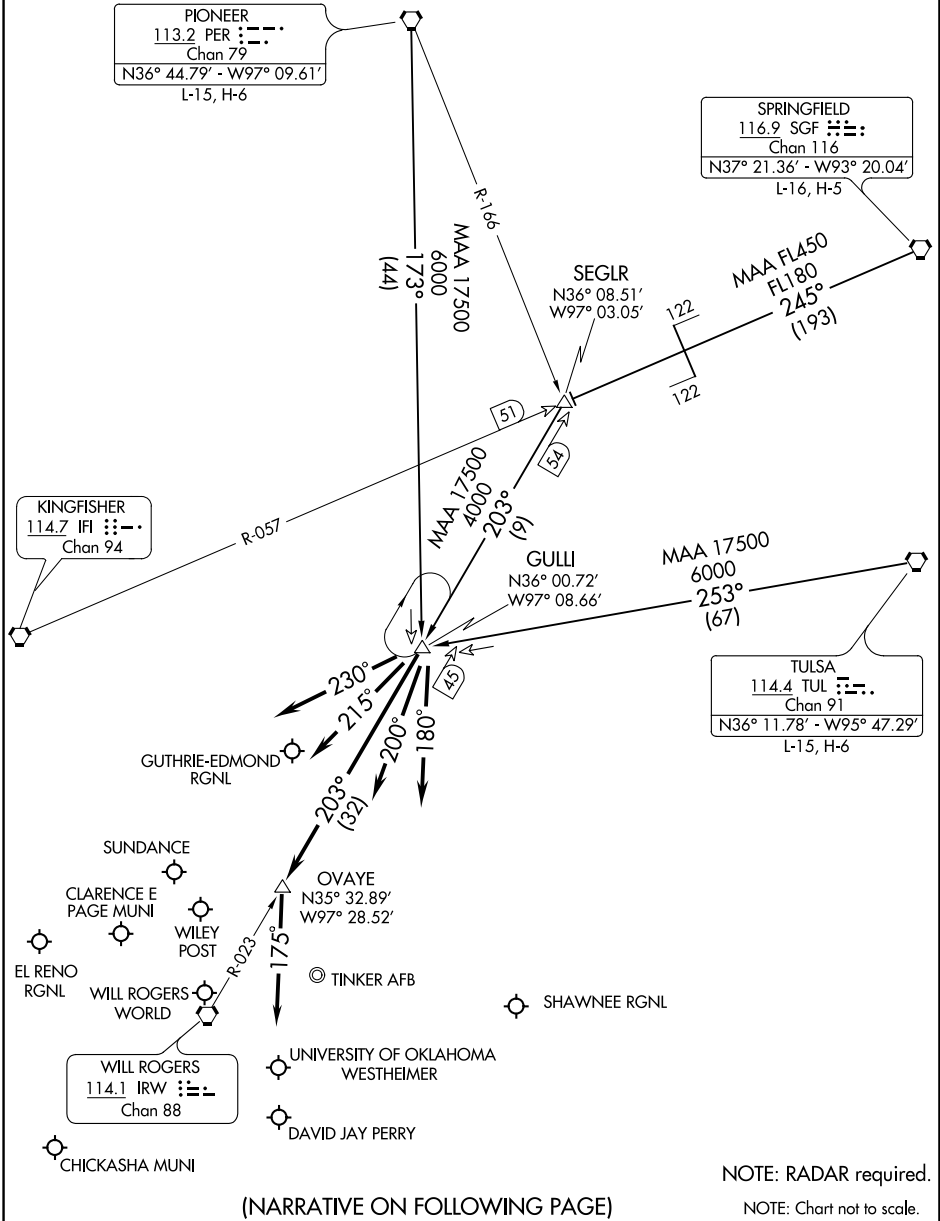


(GULLI.GULLI2) 20086
GULLI TWO ARRIVAL

AL-301 (FAA)

OKLAHOMA CITY, OKLAHOMA

OKC APP CON
124.2 336.4



SC-1, 03 DEC 2020 to 31 DEC 2020

SC-1, 03 DEC 2020 to 31 DEC 2020

GULLI TWO ARRIVAL
(GULLI.GULLI2) 29MAR18

OKLAHOMA CITY, OKLAHOMA