

LOC I-FRJ <u>111.3</u>	APCH CRS 177°	Rwy Idg 11,100 TDZE 1267 Arpt Elev 1291
----------------------------------	-------------------------	--

AL-299 [USAF]

TINKER AFB (KTIK)

- T** * When ALS inop. increase all CAT to 55 and vis to 1 mile.

** CAT E Circling NA in sector S of Rwy 13-31 and W of Rwy 18-36.
Circling NA to Rwy 18.

SALS

MISSED APPROACH: Climb to 4000 on TIK TACAN R-179 to NIDUE and hold.

ATIS ★
270.1

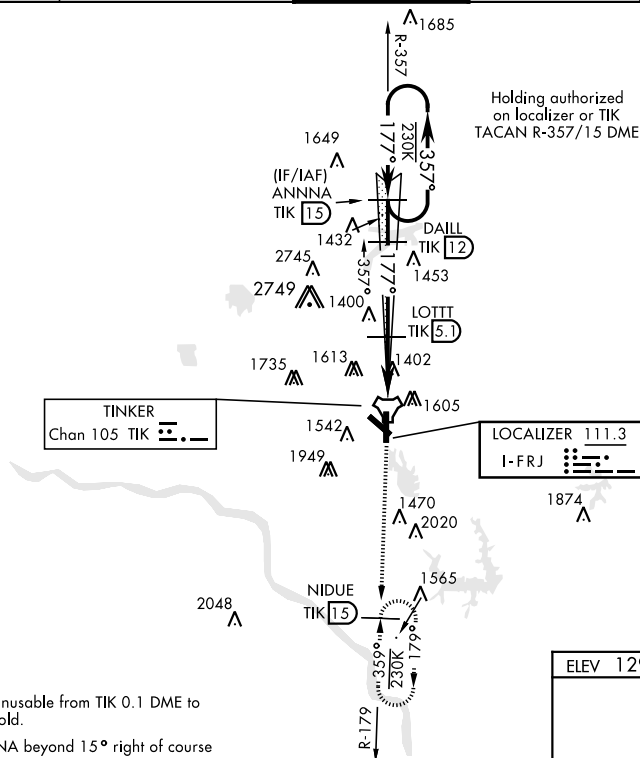
OKC CITY APP CON
124.2 336.4

TINKER TOWER
124.45 251.05

GND CON	
121.8	275.8

CLNC DEL
119.7 335.8

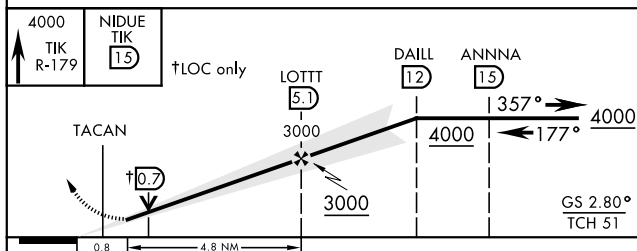
ASR



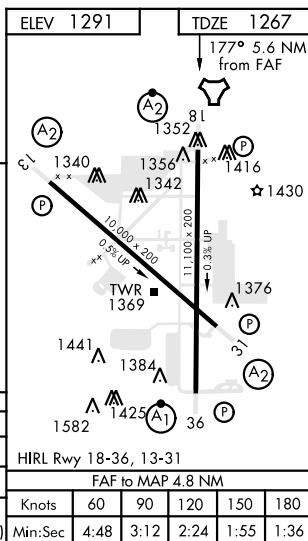
Localizer unusable from TIK 0.1 DME to rwy threshold.

Localizer NA beyond 15° right of course

EMERG SAFE ALT 100 NM 4700 FROM TIK



CATEGORY	A	B	C	D	E
S-ILS 18		1467/40	200	(200-¾)	
S-LOC 18 *		1640/40	373	(400-¾)	
CIRCLING **	1900-1	609 (700-1)	1960-1¾ 669 (700-1¾)	1960-2 669 (700-2)	1960-2¼ 669 (700-2¼)



ILS or LOC/DME Z RWY 18