

HI-ILS or LOC/DME Y RWY 18

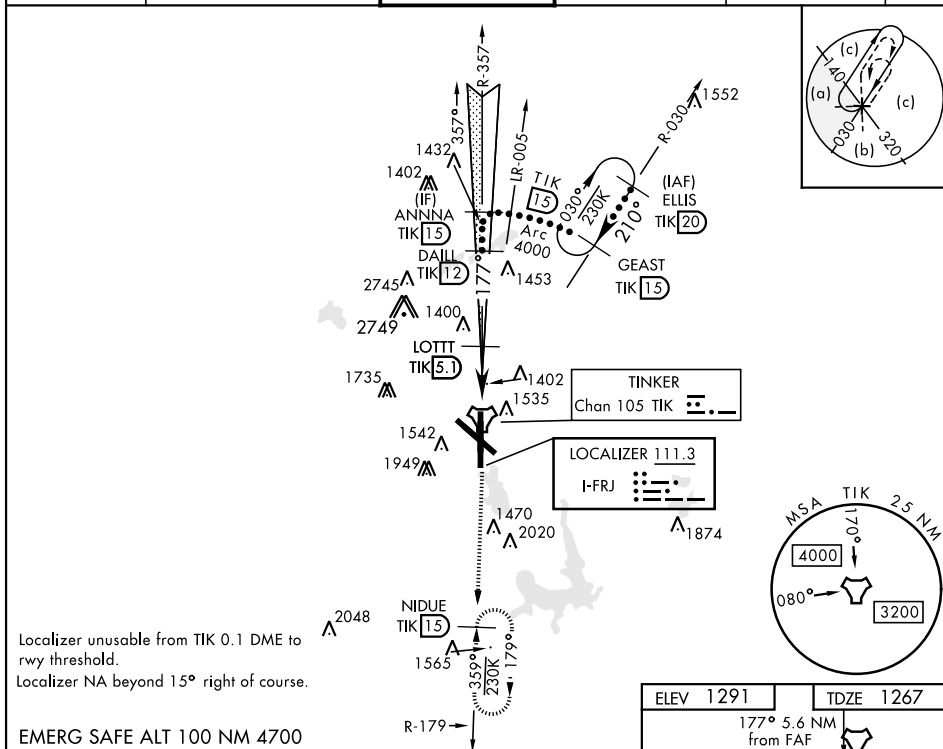
LOC I-FRJ 111.3	APCH CRS 177°	Rwy ldg 11,100 TDZE 1267 Arpt Elev 1291
---------------------------	-------------------------	--

JAL-299 [USAF]

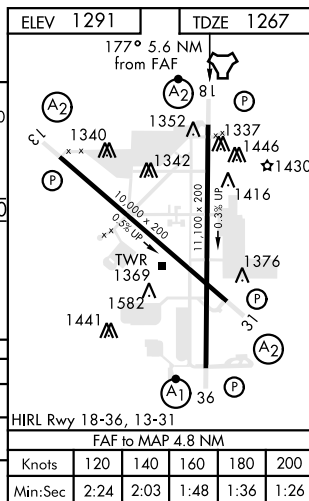
TINKER AFB (KTIK)

<p>▼ * When ALS inop, increase CAT CDE RVR to 55 and vis to 1 mile.</p> <p>** CAT E circling NA in sector S of Rwy 13-31 and W of RWY 18. Circling NA to Rwy 18.</p>	<p>SALS</p> <p>A2</p>	<p>MISSED APPROACH: Climb to 4000 on TIK TACAN R-179 to NIDUE and hold.</p>
--	------------------------------	---

ATIS ★ 270.1	OKE CITY APP CON 124.2 336.4	TINKER TOWER 124.45 251.05	GND CON 121.8 275.8	CLNC DEL 119.7 335.8	ASR
------------------------	--	--------------------------------------	-------------------------------	--------------------------------	-----



4000 TIK R-179	NIDUE TIK 15	†LOC Only				



HI-ILS or LOC/DME Y RWY 18