

FORT SILL, OKLAHOMA

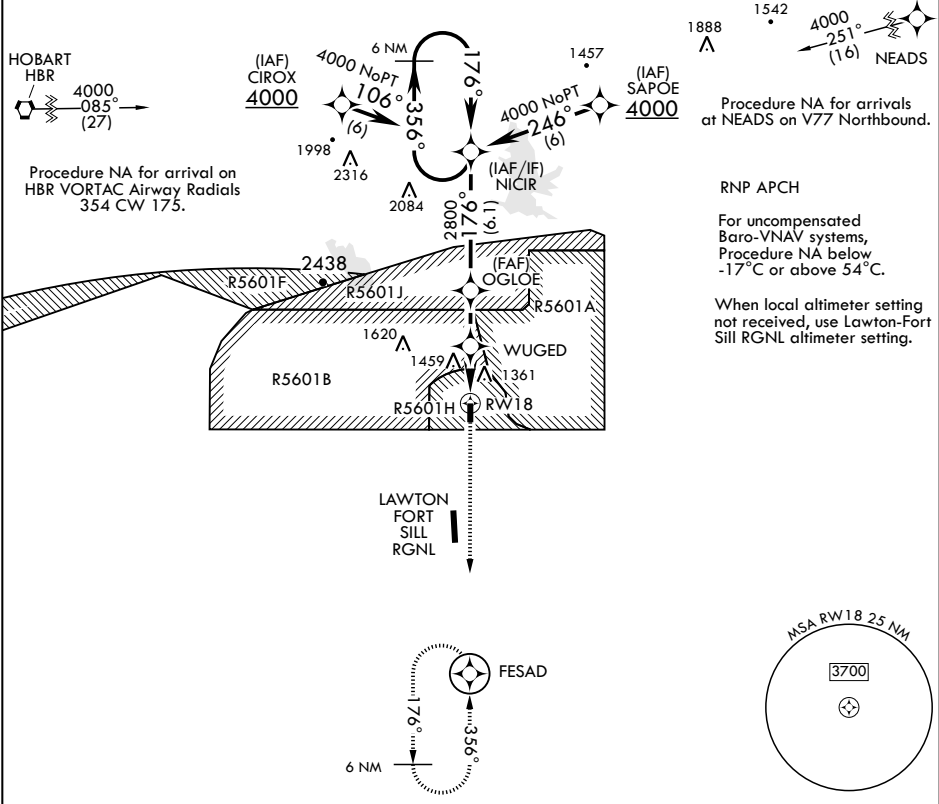
RNAV (GPS) RWY 18

APCH CRS	Rwy Idg	5001
176°	TDZE	1188
	Arprt Elev	1188

AL-230 (USA)

HENRY POST AAF (KFSI)

		MISSED APPROACH: Climb to 3500 direct to FESAD and hold.			
ATIS	FORT SILL APP CON/DEP CON	TOWER ★	POST GND CON	CLNC DEL	ASR
135.425 354.025	120.55 322.4	124.95 (CTAF) 0★ 229.4	121.7 279.575	121.7 279.575	



GP 3.00° TCH 44		NICIR		3500 FESAD		ELEV 1188	TDZE 1188
6000 4000		356° 176°		OGLOE		176° to RW18	
		2800		WUGED		BCN 1262	
		* 2020		* 1.2 NM to RW18		TWR 1247	
		2.4 NM		2.5 NM		5001 x 150	
CATEGORY	A	B	C	D			
LNAV/VNAV DA	1673-1½		485		(500-1½)		
LNAV MDA	1600-1	412 (500-1)	1600-1½	412 (500-1½)			
CIRCLING	1680-1	1760-1	1820-1¾	1920-2¼			
	492 (500-1)	572 (600-1)	632 (700-1¾)	732 (800-2¼)			

FORT SILL, OKLAHOMA

34°39'N - 98°24'W

HENRY POST AAF (KFSI)

Amdt 1 20JUN19

RNAV (GPS) RWY 18

SC-1, 03 DEC 2020 to 31 DEC 2020

SC-1, 03 DEC 2020 to 31 DEC 2020