

ENID, OKLAHOMA

VOR/DME-A

VORTAC END 115.4 Chgn 101	APCH CRS 314°	Rwy Idg N/A TDZE N/A Arpt Elev 1307
---	-------------------------	--

AL-135 [USAF]

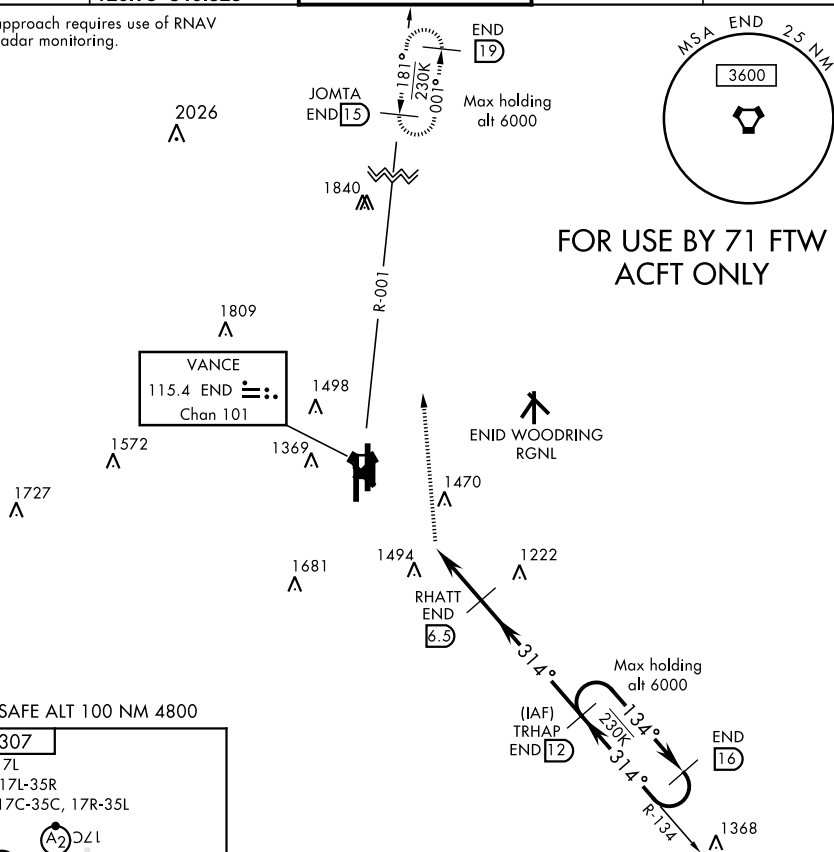
VANCE AFB (KEND)

T * Circle to remain East of Rwy 35R/17L extended centerline unless directed otherwise by ATC. Circling NA at night to Rwy 35R.

† MISSED APPROACH: Immediate climbing right turn to 4000 via heading 353° to JOMTA and hold.

ATIS ★	VANCE APP CON	VANCE TOWER ★	GND CON	CLNC DEL
115.4 263.15	125.45 388.2 EAST 126.75 346.325 WEST	124.05 259.1	121.8 289.4	225.4

† Missed approach requires use of RNAV or ATC radar monitoring.



EMERG SAFE ALT 100 NM 4800

The diagram shows a proposed rail alignment crossing Rte 92. The alignment consists of two main vertical tracks labeled 17L and 17R. Track 17L has a center-to-center distance of 0.35 UP from track 17R. Both tracks are flanked by 35C and 35L safety zones. A central crossing area is marked with a diamond shape and contains the text "X X X". To the right of the tracks, there are two sets of dimensions: 9217' x 150' and 5024' x 150'. A TWR (Tower) is located at 1416 feet, with a star symbol indicating a distance of 1457 feet from the alignment. An arrow points from the bottom right towards the alignment, labeled "314° 5.7 NM from FAF".

4000 hdg 353° JOMTA END R-001 15

VORTAC IPIKE 4 RHATT 6.5 TRHAP R-134 12

314° 134° 3000 2700

3.2 NM 2.5 NM

CATEGORY	A	B	C	D	E
CIRCLING*	1780-4	473 (500-4)	NOT AUTHORIZED		

ENID, OKLAHOMA

36°20'N-97°55'W

VANCE AFB (KEND)

Amdt 4 06FEB14

VOR/DME-A

SC-1, 03 DEC 2020 to 31 DEC 2020

SC-1, 03 DEC 2020 to 31 DEC 2020