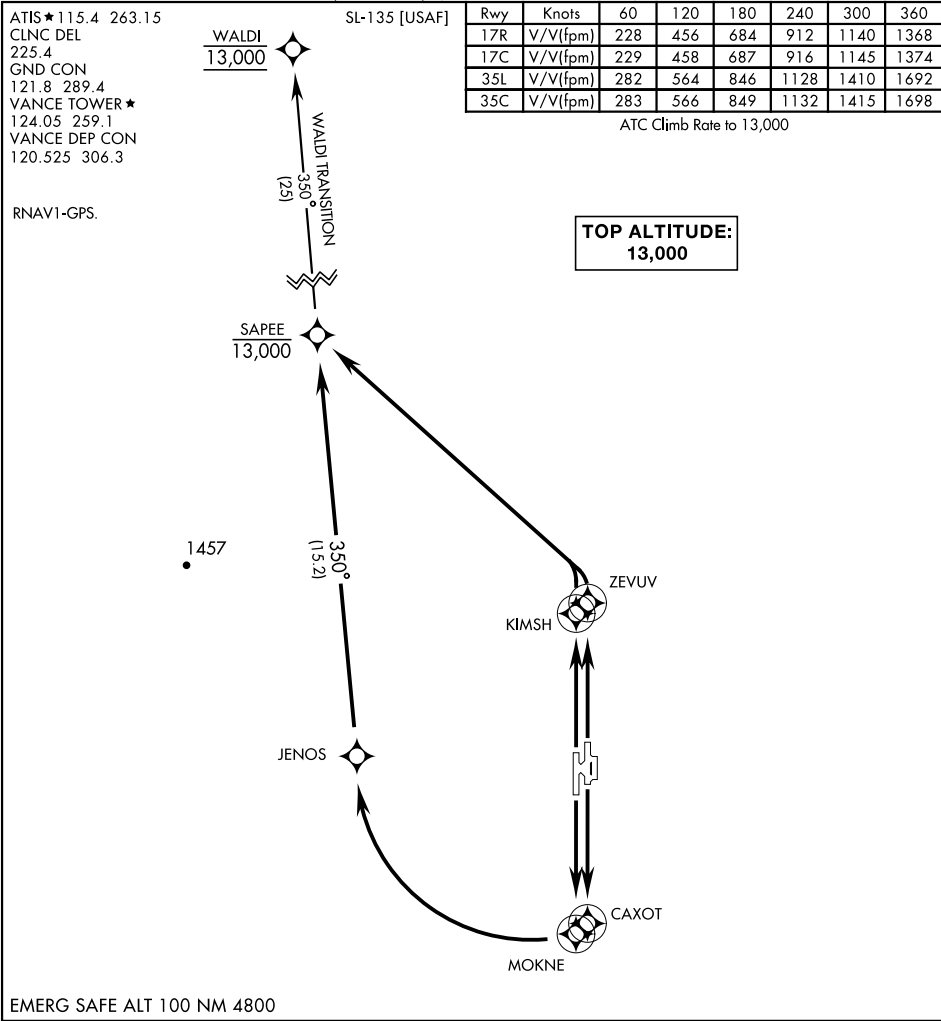


|                   |               |     |          |     |     |     |      |      |      |
|-------------------|---------------|-----|----------|-----|-----|-----|------|------|------|
| ATIS★115.4 263.15 | SL-135 [USAF] | Rwy | Knots    | 60  | 120 | 180 | 240  | 300  | 360  |
| CLNC DEL          |               | 17R | V/V(fpm) | 228 | 456 | 684 | 912  | 1140 | 1368 |
| 225.4             |               | 17C | V/V(fpm) | 229 | 458 | 687 | 916  | 1145 | 1374 |
| GND CON           |               | 35L | V/V(fpm) | 282 | 564 | 846 | 1128 | 1410 | 1692 |
| 121.8 289.4       |               | 35C | V/V(fpm) | 283 | 566 | 849 | 1132 | 1415 | 1698 |
| VANCE TOWER★      |               |     |          |     |     |     |      |      |      |
| 124.05 259.1      |               |     |          |     |     |     |      |      |      |
| VANCE DEP CON     |               |     |          |     |     |     |      |      |      |
| 120.525 306.3     |               |     |          |     |     |     |      |      |      |

ATC Climb Rate to 13,000

RNAV1-GPS.

TOP ALTITUDE:  
13,000



▼

DEPARTURE ROUTE DESCRIPTION

TAKE-OFF RWY 17C: Climb direct CAXOT, then right turn direct JENOS, then climbing track 350° to cross SAPEE at or below 13,000.

TAKE-OFF RWY 17R: Climb direct MOKNE, then right turn direct JENOS, then climbing track 350° to cross SAPEE at or below 13,000.

TAKE-OFF RWY 35L: Climb direct KIMSH, then climbing left turn direct to cross SAPEE at or below 13,000.

TAKE-OFF RWY 35C: Climb direct ZEVUV, then climbing left turn direct to cross SAPEE at or below 13,000.

WALDI TRANSITION (SAPEE1.WALDI): From over SAPEE climbing track 350° to cross WALDI at 13,000.

SC-1, 03 DEC 2020 to 31 DEC 2020

SC-1, 03 DEC 2020 to 31 DEC 2020