

ENID, OKLAHOMA

RNAV (GPS) RWY 35C

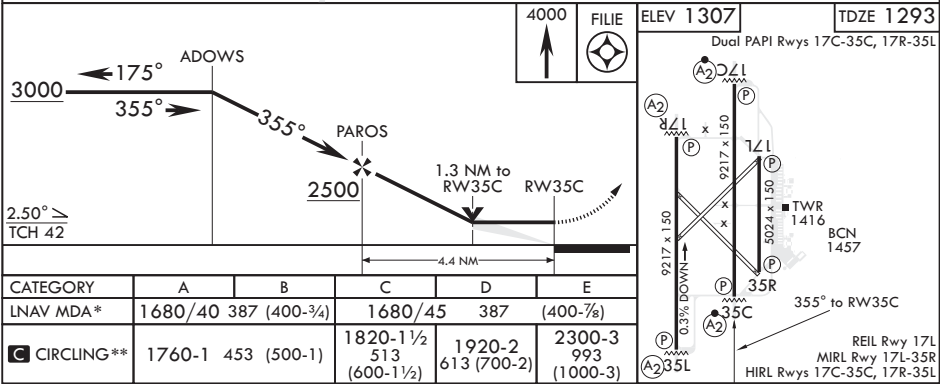
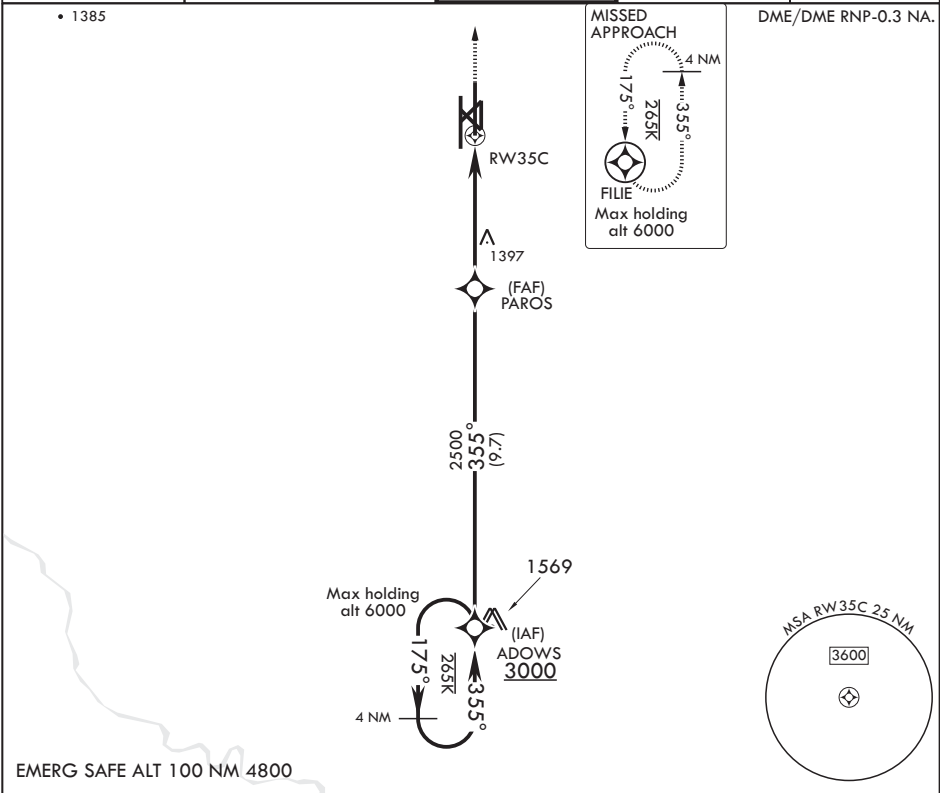
APCH CRS	Rwy Idg	9217
355°	TDZE	1293
	Arpt Elev	1307

AL-135 (USAF)

VANCE AFB (KEND)

<p>▼ * When ALS inop, increase CAT A8 RVR to 55 and vis to 1 mile, CAT CDE RVR to 60 and vis to 1 1/8 miles. ** Circling not authorized at night to RWY 35R.</p>	<p>SALS</p> 	<p>MISSED APPROACH: Climb to 4000 direct FILE and hold.</p>
---	--	---

<p>ATIS*</p> <p>115.4 263.15</p>	<p>APP CON</p> <p>125.45 388.2 EAST 126.75 346.325 WEST</p>	<p>TOWER*</p> <p>124.05 259.1</p>	<p>GND CON</p> <p>121.8 289.4</p>	<p>CLNC DEL</p> <p>225.4</p>
---	--	--	--	-------------------------------------



ENID, OKLAHOMA

36°20'N - 97°55'W

VANCE AFB (KEND)

Amndt 7 15AUG19

RNAV (GPS) RWY 35C

SC-1, 03 DEC 2020 to 31 DEC 2020

SC-1, 03 DEC 2020 to 31 DEC 2020