

## RNAV (GPS) RWY 17C

APCH CRS 175°	Rwy Idg <b>9217</b> TDZE <b>1277</b> Arpt Elev <b>1307</b>
------------------	--

AL-135 (USAF)

VANCE AFB (KEND)

**T** \* When ALS inop, increase CAT AB RVR to 55 and vis to 1 mile, CAT CDE RVR to 60 and vis to 1 1/8 miles.  
\*\* Circling not authorized at night to RWY 35R.

**SALS**

**MISSED APPROACH:** Climb to 4000 direct ADOWS and hold.

ATIS★  
115.4 263.15

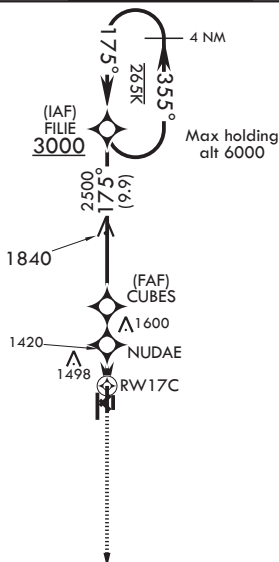
APP CON  
125.45 388.2 EAST  
126.75 346.325 WEST

TOWER★  
24.05 259.1

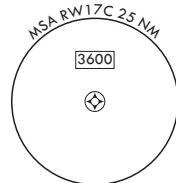
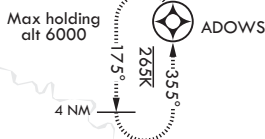
GND CON  
121.8 289.4

CLNC DEL  
225.4

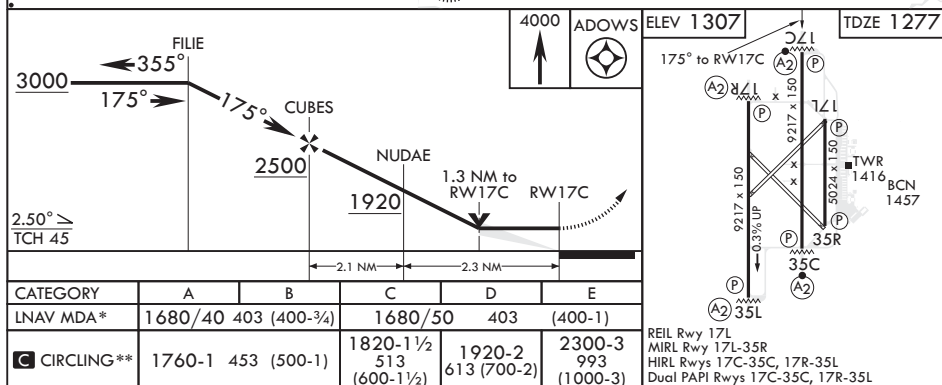
DME/DME RNP-0.3 NA



1608



EMERG SAFE ALT 100 NM 4800



ENID, OKLAHOMA

36°20'N - 97°55'W

VANCE AFB (KEND)

Amdt 8 15AUG19

RNAV (GPS) RWY 17C

SC-1, 03 DEC 2020 to 31 DEC 2020