

ENID, OKLAHOMA

LOC I-END	APCH CRS	Rwy Idg
<b>110.1</b>	<b>355°</b>	<b>9217</b>
	TDZE	<b>1293</b>
	Arpt Elev	<b>1307</b>

AL-135 [USAF]

# ILS or LOC RWY 35C

VANCE AFB (KEND)

RADAR or DME required.

▼ \*When ALS inop, increase CAT AB RVR to 55, vis to 1 mile; CAT CDE RVR to 50, vis to 1 mile.  
\*\*Circling not authorized at night to Rwy 35R.

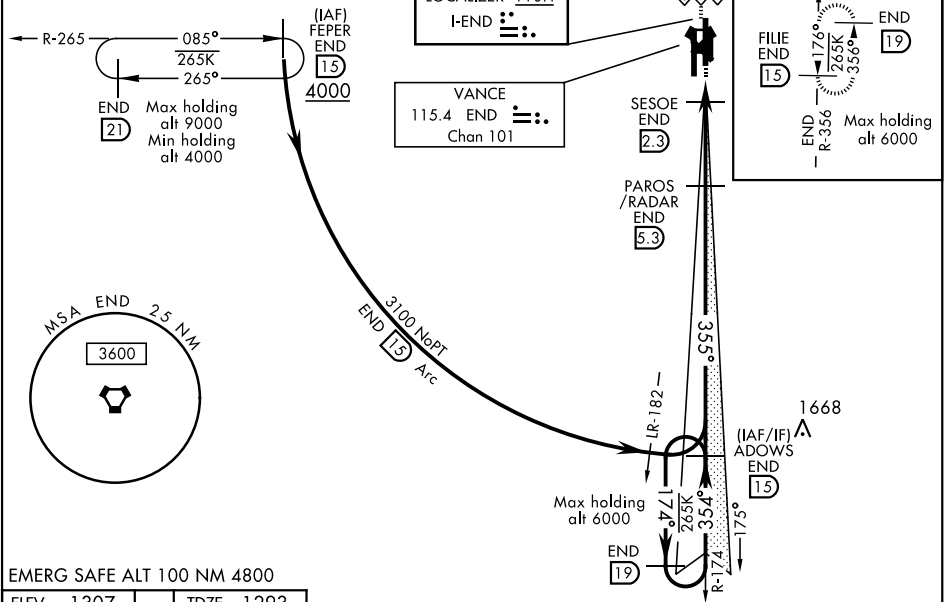
SALSF



MISSED APPROACH: Climb to 4000, intercept END VORTAC R-356 to FILE and hold.

ATIS ★	VANCE APP CON	VANCE TOWER ★	GND CON	CLNC DEL
<b>115.4 263.15</b>	<b>125.45 388.2 EAST</b> <b>126.75 346.325 WEST</b>	<b>124.05 259.1</b>	<b>121.8 289.4</b>	<b>225.4</b>

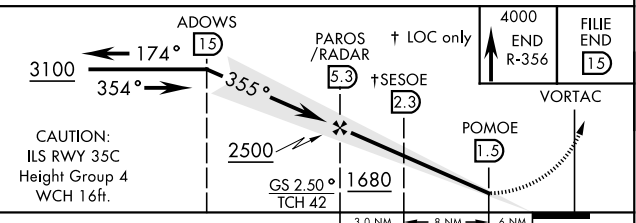
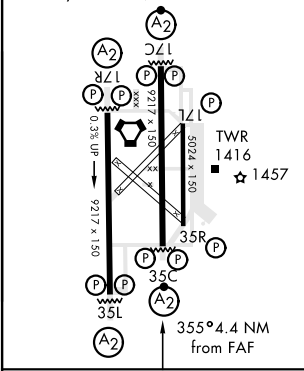
\*\*\*When ALS inop, increase CAT AB RVR to 55, vis to 1 mile; CAT CDE RVR to 60, vis to 1½ mile.



EMERG SAFE ALT 100 NM 4800

ELEV	1307	TDZE	1293
------	------	------	------

REIL Rwy 17L  
MIRL Rwy 17L-35R  
HIRL Rwy 17C-35C, 17R-35L



CATEGORY	A	B	C	D	E
S-ILS 35C	1493/40		200	(200-¾)	
S-LOC 35C*	1620/40		327	(400-¾)	
CIRCLING**	1760-1		1820-1½	1920-2	2300-3
	453		513	613	993
	(500-1)		(600-1½)	(700-2)	(1000-3)
WITHOUT SESOE FIX MINIMUMS					
S-LOC 35C***	1680/40	387 (400-¾)	1680/45	387 (400-¾)	
CIRCLING**	1760-1		1820-1½	1920-2	2300-3
	453		513	613	993
	(500-1)		(600-1½)	(700-2)	(1000-3)

ENID, OKLAHOMA

36°20'N-97°55'W

VANCE AFB (KEND)

Amtd 1 10SEP20

# ILS or LOC RWY 35C

SC-1, 03 DEC 2020 to 31 DEC 2020

SC-1, 03 DEC 2020 to 31 DEC 2020