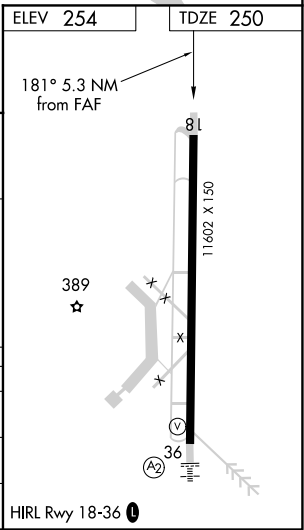
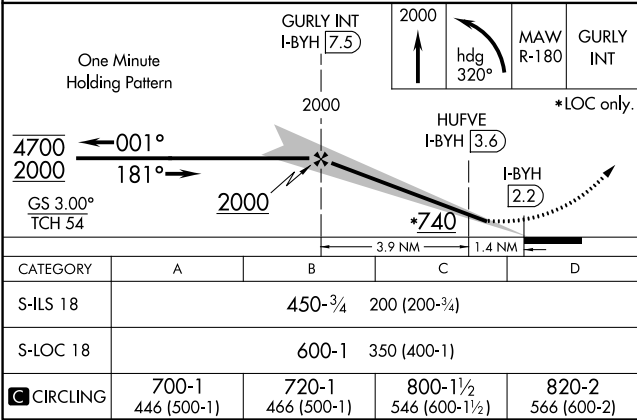
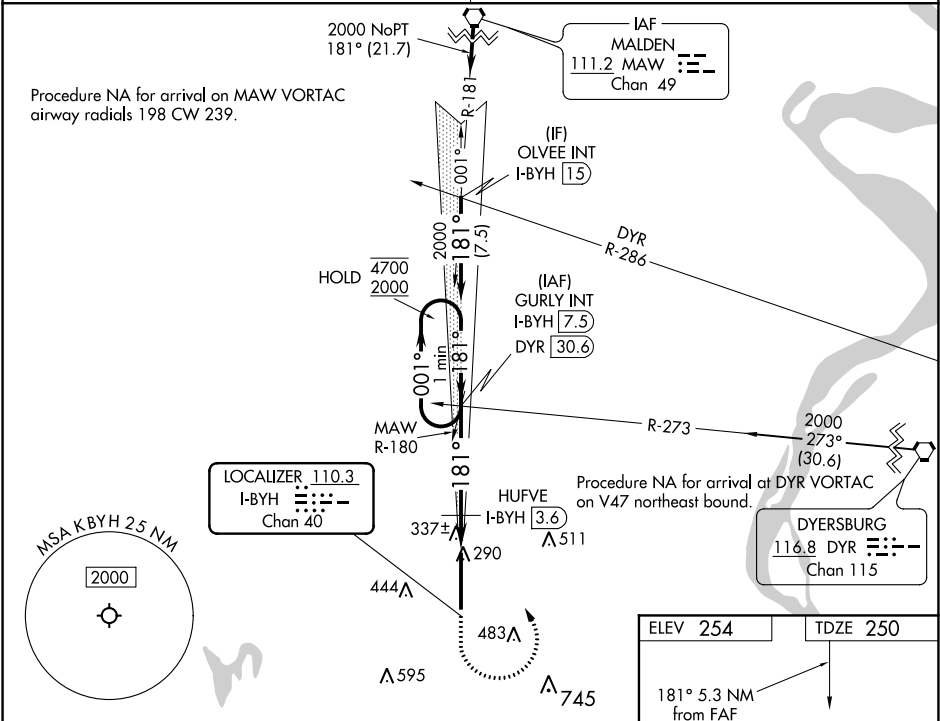


LOC/DME I-BYH <b>110.3</b> Chan <b>40</b>	APP CRS <b>181°</b>	Rwy Idg <b>11602</b> TDZE <b>250</b> Apt Elev <b>254</b>
---	------------------------	--

ILS or LOC RWY 18  
ARKANSAS INTL (BYH)

DME required for LOC only. DME required for DYR VORTAC to GURLY transition.	MISSED APPROACH: Climb to 2000, then left turn heading 320° and MAW VORTAC R-180 to GURLY INT and hold.
--	---

MEMPHIS CENTER <b>134.65 316.15</b>	UNICOM <b>122.7 (CTAF) 0</b>
--	---------------------------------



SC-1, 03 DEC 2020 to 31 DEC 2020

SC-1, 03 DEC 2020 to 31 DEC 2020