

APP CRS	Rwy Idg	5752
058°	TDZE	10
	Apt Elev	11

RNAV (GPS) RWY 5

KOSRAE (TTK)(PTSA)

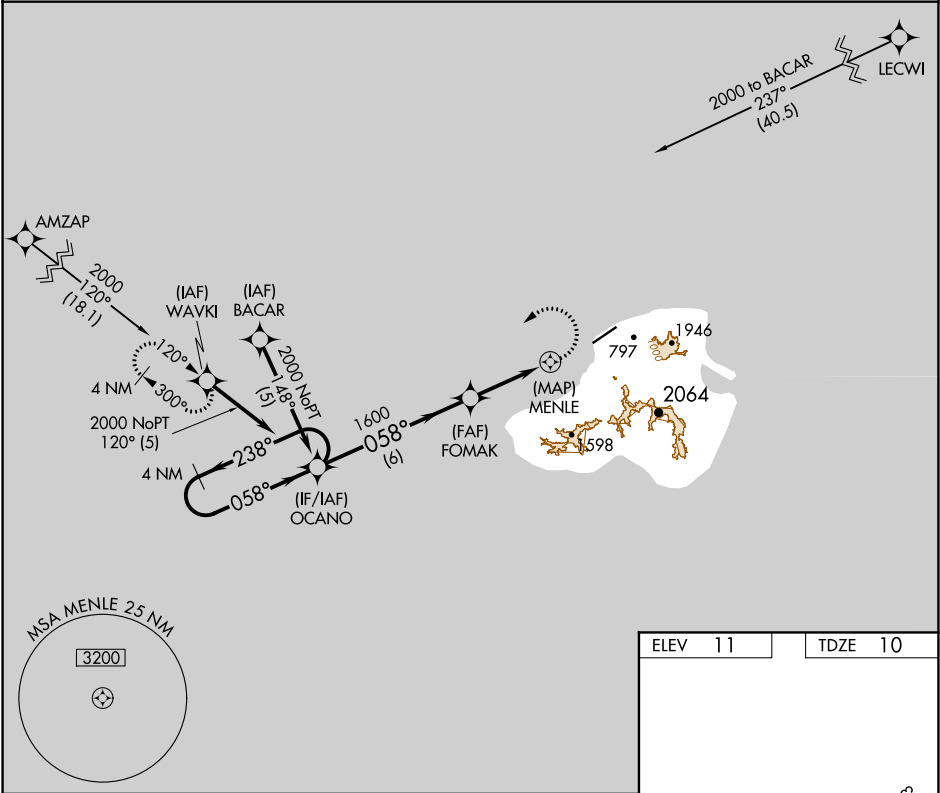
⚠

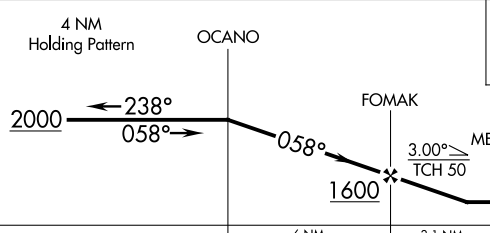
⚠

Circling not authorized southeast of Rwy 5-23.  
Obtain local altimeter setting on CTAF; when not received, procedure not authorized. DME/DME RNP-0.3 NA.  
No controlled airspace below 5500.

MISSED APPROACH: Climbing left turn to 2000 direct WAVKI WP and hold.

KOSRAE RADIO  
123.6 (CTAF) 0



 <p>4 NM Holding Pattern</p> <p>OCANO</p> <p>2000</p> <p>238°</p> <p>058°</p> <p>058°</p> <p>FOMAK</p> <p>1600</p> <p>3.00°</p> <p>TCH 50</p> <p>MENLE</p> <p>6 NM</p> <p>3.1 NM</p> <p>1.7</p> <p>2000</p> <p>WAVKI</p>						
CATEGORY	A	B	C	D		
LNNAV MDA	460-2 450 (500-2)					
CIRCLING	520-2 509 (600-2)				580-2 569 (600-2)	

ELEV 11	TDZE 10
---------	---------

The inset chart shows the final approach segment of the RNAV (GPS) RWY 5 approach. It includes the 5752 x 150 ft segment and the 5752 x 150 ft segment. The chart also shows the 5752 x 150 ft segment and the 5752 x 150 ft segment.