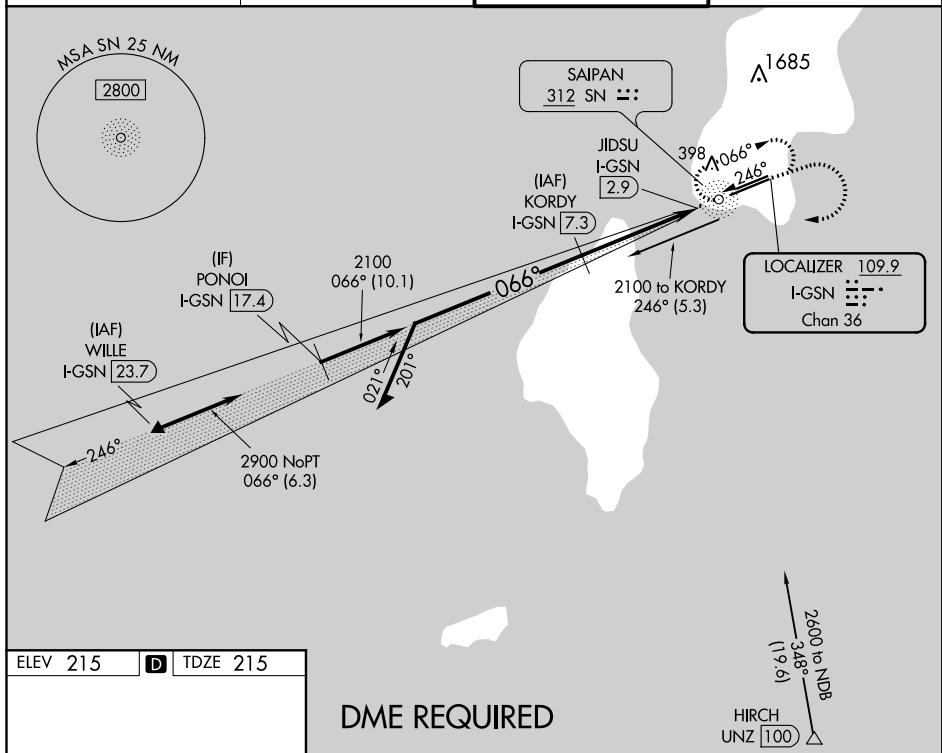


ILS or LOC RWY 7
FRANCISCO C ADA/SAIPAN INTL (GSN)(PGSN)

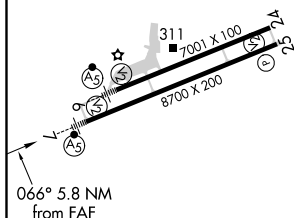
MALSR

MISSED APPROACH: Climb to 1600 then climbing right turn to 2800 direct SN NDB and hold.

GND CON
121.8

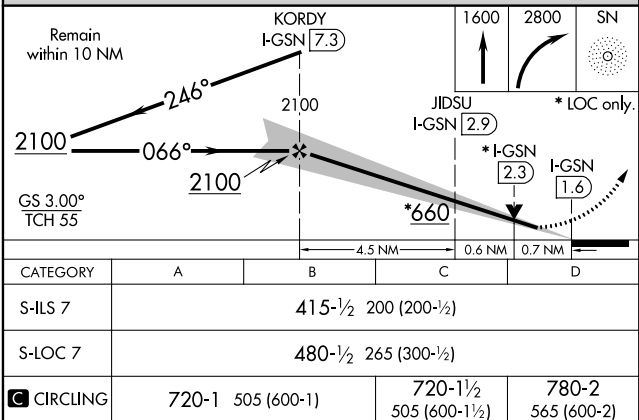


ELEV 215	D	TDZE 215
----------	----------	----------



REIL Rwy 25
HIRL Rwy 7-25 and 6-24

DME REQUIRED



FRANCISCO C ADA/SAIPAN INTL (GSN)(PGSN)

15°07'N-145°44'E

ILS or LOC RWY 7