

NDB/DME MAJ 316	APP CRS 249°	Rwy Idg 7913
Chan 114 (116.7)		TDZE 7
		Apt Elev 7

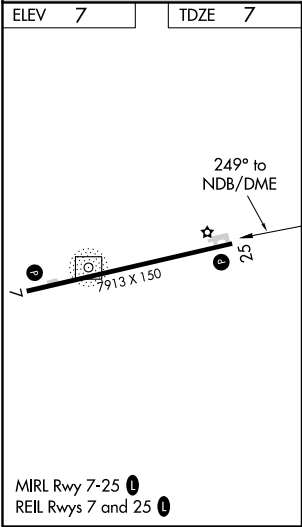
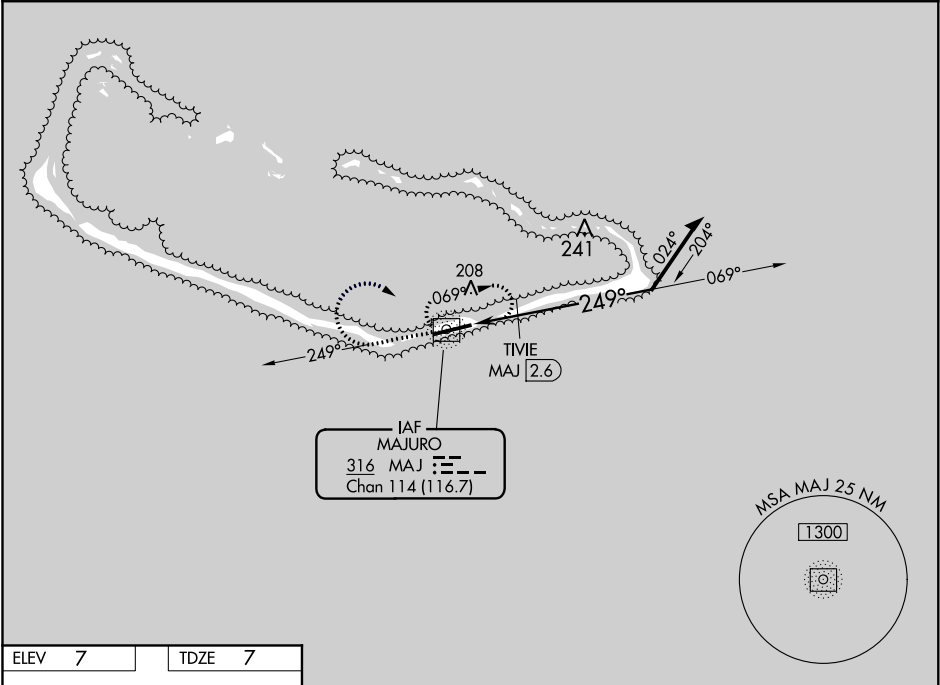
NDB RWY 25

AMATA KABUA INTL (MAJ)(PKMJ)

Obtain local altimeter setting on CTAF; when not received, procedure NA. Rwy 25 helicopter visibility reduction below ¾ SM NA. No controlled airspace below 5500.

MISSED APPROACH: Climb to 1000 on MAJ NDB/DME bearing 249° then climbing right turn to 1300 direct MAJ NDB/DME and hold.

MAJURO RADIO
123.6 (CTAF) 0



	1000	1300	MAJ	MAJ NDB/DME	Remain within 10 NM
	MAJ 249°				
				TIVIE MAJ 2.6	
				2.95°	
				TCH 46	
				600	
				2.6 NM	
CATEGORY	A	B	C	D	
S-25	600-1	593 (600-1)	600-1¾	593 (600-1¾)	
CIRCLING	600-1	593 (600-1)	600-1¾ 593 (600-1¾)	600-2 593 (600-2)	
TIVIE FIX MINIMUMS (DME REQUIRED)					
S-25	520-1	513 (600-1)	520-1¾	513 (600-1¾)	
CIRCLING	520-1	513 (600-1)	520-1½ 513 (600-1½)	560-2 553 (600-2)	

NDB RWY 25