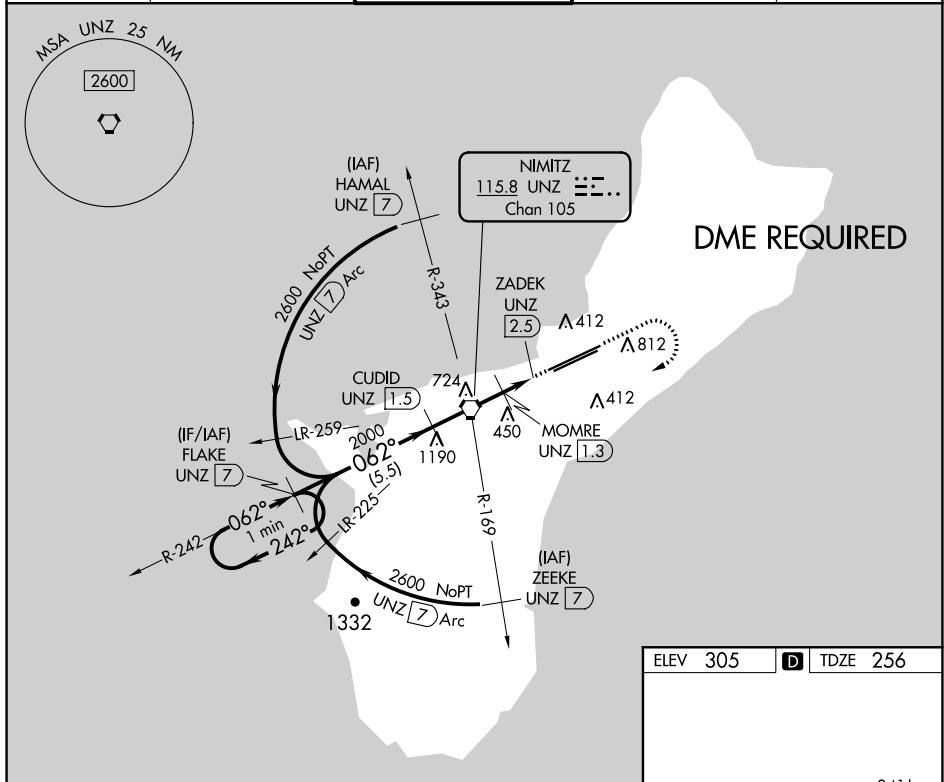


VOR or TACAN RWY 6L
GUAM INTL (GUM) (PGUM)

ATIS 119.0	GUAM CERAP 119.8 269.0	AGANA TOWER 118.1 340.2	GND CON 121.9 336.4	CLNC DEL 121.9
---------------	---------------------------	----------------------------	------------------------	-------------------



VGSI and descent angles not coincident (VGSI Angle 3.00/TCH 73).

One Minute Holding Pattern

FLAKE UNZ 7

CUDID UNZ 1.5

UNZ VORTAC

MOMRE UNZ 1.3

ZADEK UNZ 2.5

2600

242°

062°

062°

2000

1100

3.71°

TCH 73

5.5 NM

2.8 NM

1.2 NM

0.8 NM

0.5% UP

0.7% DOWN

12017 X 150

10017 X 150

0.8% UP

0.6% DOWN

270 ±

062° 4.8 NM from FAF

34 ±

21 ±

554

TWR 352

CATEGORY	A	B	C	D
S-6L	760-½	504 (500-½)	760-1 504 (500-1)	NA
C CIRCLING	860-1	555 (600-1)	940-1¾ 635 (700-1¾)	NA

HIRL all Rwys

PAC, 05 NOV 2020 to 31 DEC 2020