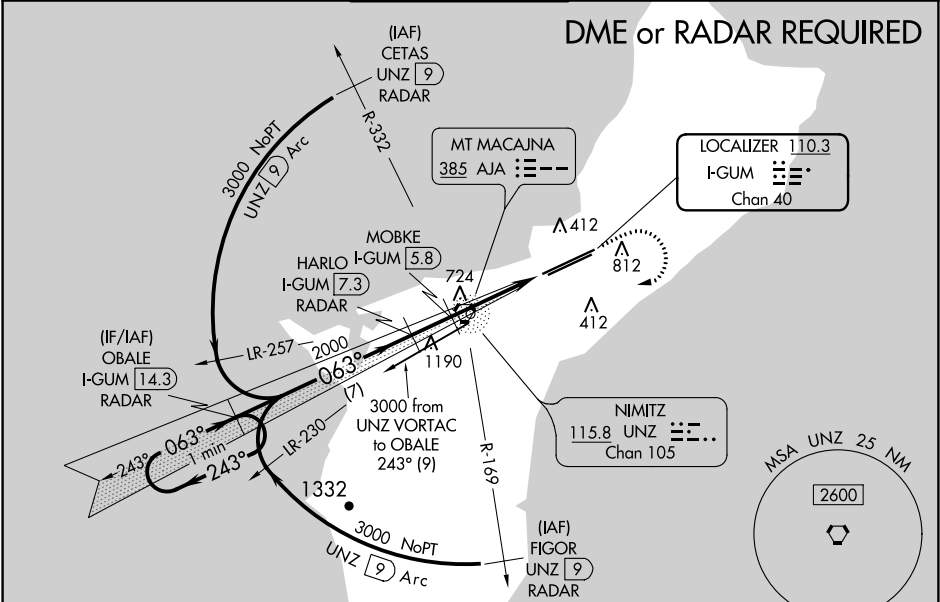


LOC/DME I-GUM	APP CRS	Rwy ldg	11014
110.3	063°	TDZE	256
Chan 40		Apt Elev	305

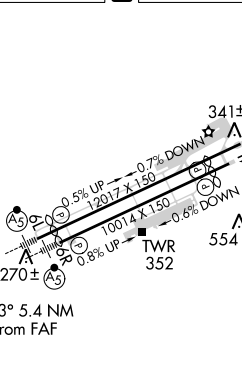
ILS or LOC RWY 6L
GUAM INTL (GUM)(PGUM)

<p>▼ Circling NA southeast of Rwy 6R-24L. DME or RADAR required. ▲ For inop ALS, increase S-ILS 6L all Cats visibility to 1 SM; MOBKE DME minimums: For inop ALS, increase S-LOC 6L Cat A visibility to 1 SM. Inop table does not apply to S-LOC 6L Cats C and D.</p>	<p>MALSR A5</p>	<p>MISSED APPROACH: Climb to 2100 then climbing right turn to 3000 direct UNZ VORTAC then on I-GUM localizer SW course to OBALE/I-GUM 14.3 DME/RADAR and hold.</p>
---	---------------------	--

ATIS 119.0	GUAM CERAP 119.8 269.0	AGANA TOWER 118.1 340.2	GND CON 121.9 336.4	CLNC DEL 121.9
---------------	---------------------------	----------------------------	------------------------	-------------------



VGSI and ILS glidepath not coincident (VGSI Angle 3.00/TCH 73).				
<p>One Minute Holding Pattern</p> <p>OBAL I-GUM 14.3 RADAR</p> <p>HARLO I-GUM 7.3 RADAR</p> <p>MOBKE I-GUM 5.8 RADAR</p> <p>Use I-GUM DME when on the localizer course.</p> <p>*LOC only</p> <p>GS 3.00° TCH 55</p> <p>7 NM 1.5 NM 1.4 NM 2.5 NM</p>				
CATEGORY	A	B	C	D
S-ILS 6L	590-1/2 334 (300-1/2)			
S-LOC 6L	1500-3/4 1244 (1200-3/4)	1500-1 1244 (1200-1)	1500-3 1244 (1200-3)	
CIRCLING	1500-1 1195 (1200-1 1/4)	1500-1 1195 (1200-1 1/2)	1500-3 1195 (1200-3)	
MOBKE FIX MINIMUMS (DME REQUIRED)				
S-LOC 6L	1100-3/4 844 (800-3/4)	1100-2 844 (800-2)		
CIRCLING	1100-1 795 (800-1)	1100-1 795 (800-1 1/4)	1100-2 795 (800-2 1/2)	1140-2 835 (900-2 3/4)

ELEV 305	D	TDZE 256			
 <p>063° 5.4 NM from FAF</p> <p>HIRL all Rwy's</p>					
FAF to MAP 5.4 NM					
Knots	60	90	120	150	180
Min:Sec	5:24	3:36	2:42	2:10	1:48

PAC, 05 NOV 2020 to 31 DEC 2020

PAC, 05 NOV 2020 to 31 DEC 2020