

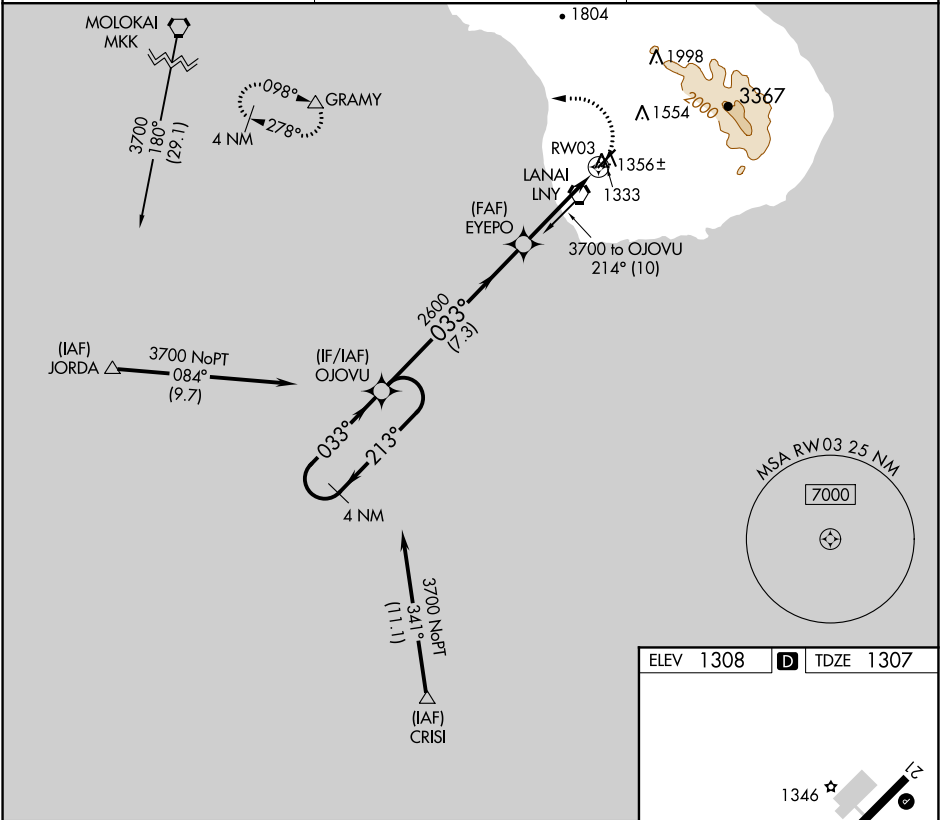
APP CRS	Rwy Idg	5000
033°	TDZE	1307
	Apt Elev	1308

RNAV (GPS) RWY 3
LANAI (LNY)(PHNY)

When VGSI inop, Circling Rwy 21 NA at night. DME/DME RNP-0.3 NA.
When local altimeter setting not received, procedure NA, except for operators with approved weather reporting service.

MISSED APPROACH: Climbing left turn to 3300 direct GRAMY and hold.

AWOS-3P 118.375	HCF CENTER 119.3 307.1	CTAF 122.9
--------------------	---------------------------	---------------



4 NM Holding Pattern		OJOVU		3300 GRAMY	
3700		213°		033°	
033°		033°		2600	
7.3 NM		2.7 NM		1.2 NM	
CATEGORY	A	B	C	D	
LNAV MDA	1720-1	413 (500-1)	1720-1¼	413 (500-1¼)	
CIRCLING	1840-1 532 (600-1)	1880-1 572 (600-1)	1900-1½ 592 (600-1½)	1900-2 592 (600-2)	

