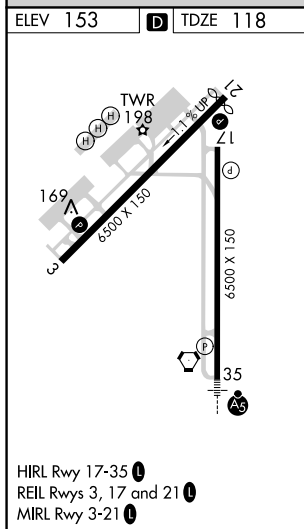


VOR/DME or TACAN RWY 21
LIHUE (LIH)(PHLI)

MISSED APPROACH: Climbing left turn to 3000 via heading 152° and LIH VORTAC R-148 to NAGAI/12 DME and hold.

GND CON
121.9



CATEGORY	A		B	C	D
S-21	520-1 402 (400-1)		520-1¼ 402 (400-1¼)		
CIRCLING	600-1 447 (500-1)	1000-1¼ 847 (900-1¼)	1060-2¾ 907 (1000-2¾)	1060-3 907 (1000-3)	

VOR/DME or TACAN RWY 21