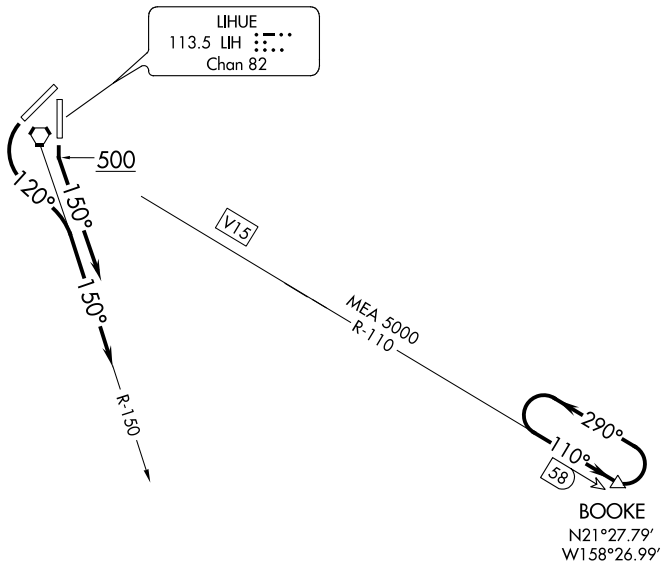


ATIS  
127.2  
GND CON  
121.9  
LIHUE TOWER★  
118.9 (CTAF) 263.1  
HCF CENTER  
126.5 269.4



NOTE: DME required.  
NOTE: Terrain heights to 2297' occur within 4.5 NM southwest of the airport.  
NOTE: Chart not to scale.

DEPARTURE ROUTE DESCRIPTION

**TAKEOFF RUNWAY 17:** Climb runway heading to 500 feet , then climbing left turn to heading 150°, expect RADAR vectors to intercept LIH R-110 to BOOKE DME fix. MEA 5000.

**TAKEOFF RUNWAY 21:** Immediate climbing left turn to heading 120° until crossing LIH R-150, thence fly heading 150°, expect RADAR vectors to intercept LIH R-110 to BOOKE DME fix. MEA 5000.

**LOST COMMUNICATIONS:** If not in contact with Honolulu CERAP one minute after departure, maintain SID heading until 10 NM southeast of LIH VORTAC, then intercept LIH R-110 to BOOKE DME fix. MEA 5000.